

Georgia Association of Private and Parochial Schools



2023-24 Fine Arts Manual

Revised August 28, 2023

Table of Contents

- [General Rules](#)
- [Points, Trophies and Awards](#)
- [Fine Arts/Academics Fees](#)
- [Fine Arts](#)
 - [Chorus](#)
 - [Honors Chorus](#)
 - [Instrumental Music Festival](#)
 - [Literary](#)
 - [One-Act Play](#)
 - [MS One-Act Play Festival](#)
 - [Praise Band](#)
 - [Visual Arts](#)
- [Academic Competitions](#)
 - [Chess](#)
 - [Elementary Academics Day](#)
 - [Essay \(Personal/ MS\)](#)
 - [Geography Bee](#)
 - [History Bowl](#)
 - [Math Bowl](#)
 - [Middle School Academics Day](#)
 - [Quiz Bowl](#)
 - [Robotics](#)
 - [Science Fair](#) - Update coming in November
 - [Spelling Bee](#)

General Rules

Expectations for Schools

- Student Eligibility can be found in our GAPPS Constitution and Bi-Laws Manual.
- Each school entering any Fine Arts or Academics event must submit an online roster for all students participating.
- If an individual/ team qualifies for State and is unable to participate but doesn't inform the league within 48 hours of the State competition, there will be a \$50.00 fee charged to the school. If more than 48 hours notice is given, the next team/ student will be moved up to State and the canceling school will not incur a fine.

Timed events

- A timekeeper will be provided for all timed events. The timekeeper will be in plain view of each contestant.
- A stopwatch shall be provided for each timekeeper.
- Cards will be used to let the contestant know when the minimum time limit has been reached and when they are within one minute of the time limit. The timekeeper will stand up and give an audible STOP when the time limit is reached.
- If the contestant does not stop when the time limit is reached, there will be a point deduction.
- There will be a written record of each contestant's time on the judge's evaluation sheet.

General Conduct

- All Coaches must inform parents that they are only allowed to videotape their child.
- Participants are not allowed to possess or operate any type of electronics in the performance and/ or competition areas.
- School uniforms are appropriate and allowed for all events **except** One-Act Play and Literary.
 - At One-Act Play and Literary, all students/ participants are not allowed to wear school uniforms and logos, and audience members are

discouraged from wearing any clothing with school logo, so as not to unintentionally or unfairly bias the judges.

- If jeans are permitted for a GAPPS event, they must not have holes or tears in them.

Performance Conduct

- A Christ-like manner shall be exhibited in all presentations. A GAPPS staff member will be at every Region and State Event. There should be no lewd or sexual gestures nor any profanity in any event. If anything of this nature is presented, it can be an automatic disqualification for that participant(s).
- Because of copyright laws, no music duplication will be permitted. A letter from the publisher authorizing duplication is acceptable. If the music is purchased via the internet from the publisher, it must include proof of purchase or a receipt.

Judging

- In GAPPS Fine Arts Events, all schools will be identified by a number. No school's or contestant's names will be used until all judges' evaluation sheets have been turned in and tabulated.
- Rules and evaluation forms will be sent to judges two weeks prior to Region and State Competitions.
- Each contestant will be judged based on merit according to the points set out as essential for judging each particular contest.
- All mistakes due to errors in arithmetic or made contrary to the rules of the contest and discovered before or after the decision of the judges, shall be corrected. Corrections in the Region and State Meets must be made within 48 hours of the meet.

Venues

- Region venues must contain enough seating for ALL schools to observe performances at one time.
- There is no charge for admission for the audience members at regional competitions. State Championships may charge up to \$10.00 per person.

Points, Trophies and Awards

- GAPPS will determine the number of participants moving from Region to State Competition each year based on the number of Regions. First Place and Second Place will always advance in High School Competitions.
- Championship and Runner-Up trophies will be presented for all High School Fine Arts Events at the State level.

2023-24 Fine Arts and Academics Fees

A la carte

*Prices below include one (1) group or team, unless marked with an *. Each event marked with an * includes one (1) additional team. Additional teams beyond two (2) where allowed, are charged at \$100 each unless otherwise stated.*

Fine Arts

- Chorus*: \$300
- Instrumental*: \$300
- Praise Band*: \$300
- One-Act: \$500
- Spring Literary:
 - 1-5 students and up to 5 events: \$300
 - 6-10 students and up to 10 events: \$450
 - 11+ students and 11+ events: \$750
- Visual Arts:
 - Elementary: \$150
 - Middle School: \$200
 - High School: \$300
 - OR \$500 for all 3 divisions
- MS One-Act Festival: \$300
- Honors Chorus: \$40/ student
- Honors Band: TBD

Academics

- Academic Days: \$450 (MS)
\$350 (ES)
- Chess*: 2 teams of 4 per division
 - HS: \$150
 - MS: \$150
 - ES: \$150
- History Bowl (HS)*: \$300
- Math Bowl (HS)*: \$300
- Quiz Bowl*: \$300 (HS), \$200 (MS)
- Robotics*: \$150
- Middle School Science Fair: \$150

Fine Arts

Chorus Festival and Competition

Middle School (Grades 6-8) and High School (Grades 7-12)

Choral Festival Categories

- Middle School
 - Small Ensemble: 6-16 participants
 - Large Ensemble/ Choir: 17 and above participants
- High School
 - Small Ensemble: 6-16 participants
 - Large Ensemble/ Choir: 17 and above participants

Hosting Information

- The hosting venue must provide an appropriate performance setting, including safe choral risers, a spacious hall/ auditorium, a tuned piano in good condition and acoustics that lend well to choral activities.
- GAPPs is responsible for providing payment to the judges.
- Venue must contain enough seating for ALL schools to observe performances at one time.

Student Participation

- This event is for students in 6th-12th grade.
- 6th-8th grade students should participate in the Middle School Division because of their vocal range and quality. However, 7th and 8th grade students are allowed to compete in the High School Competition.
- 9th-12th grade students may only participate in only High School categories.

Music Selection

- Selections should be two contrasting pieces, one sacred and one standard repertoire. (Please refrain from using any pop culture or screen music that has been written for choirs.)
- The songs should focus on a choral sound, rather than on solos. If the song includes a solo, it should not be the major portion of the song. Judges will use their discretion in this determination.

- The songs must be sung in the language in which they are printed in the music provided for the judges.
- All selections must be memorized.
- There will be no soundtracks allowed, only live accompaniment as indicated in the music.
- All music must be from published material. JW Pepper is an excellent resource and typically has a section for School Choral. For examples, please refer to the ACDA <https://acda.org/> and GMEA <https://www.gmea.org/> websites.
- No alterations to the accompaniment are allowed.
- No microphones may be used.
- One original copy of music must be provided for each judge (usually 3). If it is a downloaded copy, proof of purchase must be included with the music.
- **Please number measures to make it easier for the judges to score.**
- No Chorus Director is allowed to be the accompanist.
- Each school will supply their own accompanist.
- A source for purchasing sheet music:
<http://www.jwpepper.com/sheet-music/welcome.jsp>

Dress Code

- Dress should be appropriate for a concert setting. It may include a school uniform or traditional concert dress. The uniform should not have any clear identification of the school.
- Cousin's Concert Attire has some great options <https://www.concertattire.com/>

Performance & Judging

- Groups will have a 20 minute performance time, with a warm-up immediately prior to their performance slot in a separate room that contains a piano.
- Directors should hand an original copy of their music to each judge (usually 3).
- **The measures must be numbered for the judges.**
- The Directors will have the option to begin with a one minute balance check. This time is included in their 20 minute time limit.
- Scoring is based on a 100 point scale.
- There will be an awards ceremony at the conclusion of the event.
- Each group will receive a Festival Rating of Superior, Excellent, Good or Fair.
- Awards will also be presented for the GAPPS State Championship for High School Choral Performance in Large and Small Groups, and Championship trophies for Middle School Performance in Large and Small Groups.

- The judges may be asked to stay until after the awards to discuss any comments notated on the score sheets with the school's director.

Chorus Director Etiquette

- Upon entering the performance stage, make sure that your students are situated correctly on the risers and that the accompanist can see you.
- Use none, any, or all of one minute to make sure that your balance between the choir and the piano is optimal. This can be accomplished by having a few measures of a separate piece prepared to sing while the piano accompanies.
- Once you are prepared, turn and face the judges. Present your school, the name of the first selection, and the name of the composer/ arranger. Then, turn to your choir to begin the performance of that piece.
- Upon completion of your first piece, turn to acknowledge the judges and wait for their signal. When they motion that they are ready for your second selection, introduce the name of the second selection and the name of the composer/ arranger, then turn to begin the performance of that piece.
- Upon completion of your second piece, turn to acknowledge the audience and their applause. Appropriately indicate the accompanist and the members of the choir, and then have your choir immediately exit the stage.

Honors Chorus

High School (Grades 7-12)

We are excited to bring back our Honors Chorus after a break due to circumstances beyond our control.

- Each school may nominate up to 10 students with at least 2 students (grades 7th -12th) from each main vocal section (soprano, alto, tenor, bass) to perform at music festival day for Instrumental. The nomination form can be found on the GAPPS website.
- GAPPS will send a link for the music so the students can learn it ahead of time.
- **Concert attire:** All black. No jacket required. No jeans allowed for this event.
- GAPPS plans to hire a guest clinician to coach the group and select the music ahead of time.
- Schools or individual students will purchase their own music via JW Pepper and link provided by GAPPS.
- Students are responsible for learning the music ahead of time to the best of their ability and arriving on time to practice the music before the concert.
- Schools will pay \$40 (nonrefundable) per student nominated. Cost covers lunch and a certificate.

Instrumental Music Festival

Middle School (Grades 6-8) and High School (Grades 7-12)

General Information

- Instrumental Categories:
 - Orchestra (50% or more orchestra instruments)
 - Concert Band (50% or more band instruments)
 - Large Ensemble (7-16) (can be most any instrumental band/group)
 - Small Ensemble (2-6) (can be most any instrumental band/group)
 - Solo: Brass, Woodwind, String or Percussion

(Piano is not considered for solo at this event)

 - Must perform level 3/ intermediate piece or higher
- Each group will have 25 minutes to set up, perform, and strike the stage.
- **Please number measures to make it easier for the judges to score.**
- Each large group (Orchestra, Concert, and Large Ensemble) will perform 2 selections and will need 3 copies of each selection of their music for the judges.
- Small Ensembles and Solos will perform 1 selection and only need 1 copy of music for the judges.
- Concert dress for instrumental GAPPS events will consist of the uniform worn by students when performing formal concerts with their local school orchestra/ensemble.
- There will be an awards ceremony at the conclusion of the event, after the Honors Chorus performance.
- Each group will receive a Festival Rating of Superior, Excellent, Good or Fair.

Music Selection

- All music must be from published material. JW Pepper is an excellent resource and usually has a section for various School Bands/ Orchestras. **(Please refrain from using any pop culture or screen music that has been written for choirs.)**
- Performance grade level I,II,III,IV,V,VI: These are the levels of graded difficulty in instrumental music.
- Directors will choose two contrasting pieces. The following categories have been provided to accommodate groups that may perform at more than one level.
 - Competition levels are as follows: A, B, C, D, E
 - Graded Level: A= I-II B= II-III C= III-IV D=IV-V E=V-VI
- In order to properly categorize your group, pieces must be selected from adjacent or same levels. (Example: If a group's selections include a level I and a level II piece, they are considered competition level A.)

- All schools must provide 2-3 (see above) original scores that have numbered measures for the adjudicators. If you cannot provide an original score you must have a letter of permission from the publishers along with your copy. Students must perform with original parts. If you have to transpose some of your instrumentation, you must specify that in the original score that is given to the adjudicators.

Ratings and Definitions

- *Superior* -Reserved for uncommonly exceptional groups that stand out as having performances that are nearly flawless.
- *Excellent*- Truly fine work; worthy of compliment and praise. Students are performing well.
- *Good* -Performance demonstrates some good technical and musical achievements; however, improvement is needed to be considered excellent
- *Fair* -A moderate number of significant problems mar the desired positive effect of the performance.
- *Poor* -Many severe problems mar the desired positive effect of the performance.

Hosting accommodations

- Need to have a director's podium, chairs, stands, piano and percussion instruments provided on site.
- Judges will be provided with the best seats in the house for clear and balanced listening.
- Adequate warm-up and stage space.

NO piano or keyboard should be used in Instrumental Band or Orchestra as an instrument.

Praise Band Festival

High School (Grades 7-12)

General Information

Goal: To foster in the students a desire to worship the Lord using their gifts and talents, while teaching them about great musicianship, leadership, and the ability to create a worshipful environment with their presence and music.

- Composition: Each band may be, but is not required to be composed of a rhythm section (Guitar, Bass, Drums, Keyboard), plus supplemental instruments. Each band may also have, but is not required to have vocalists.
- Each Praise Band should submit 3 copies of the lead sheets for their selections as well as an arrangement map/sheet showing the order of the song (i.e. intro / verse / chorus / verse / chorus / bridge / chorus / outro) marked with the dynamic range or instrumental arrangements planned. (see an example on website under Instrumental)
- Bands should be prepared to play two contrasting pieces (contrasting in tempo and/ or style)
- Each school will be allowed a warm-up/ sound-check prior to starting performance/evaluation. (approximately 10 minutes)
- Each band will then have 20 minutes max to perform.
- Dress code for each band is up to each school. **Please keep it modest and without clear indicators of your school. If jeans are worn, they must have no holes or tears.**
- There will be an awards ceremony at the conclusion of the event.
- Each group will receive a Festival Rating of Superior, Excellent, Good or Fair

Evaluation Ideas: (see Rubric)

- Band plays with consistent rhythmic synchronization, matching the dynamics and instrumental arrangement of the map, not overpowering the vocalists, but supporting the message of the song.
- Vocals sing on pitch, clearly communicate the message of the lyric, and blend well with each other. Harmonies included if more than one vocalist.
- Stage Presence - do the musicians and vocalists engage in leading of worship, modeling expressive worship that is God-oriented, and not only performance focused.

Literary

High School (Grades 7-12)

General Rules for all Literary Events

- A school may enter 1 student or 1 group per event.
- There is no minimum number of events that a school must enter in the Region competition.
- A student may only perform in two individual events and two group events for a maximum of four events.
- In the Interpretation, Vocal, and Piano events, contestants must perform the same piece at both the Region and State competitions.
- Each GAPPS region will determine a first through fourth place winner for each event. Numbers moving to State will be determined by GAPPS each year based on the number of regions.
- **During the Region Meets, the judges will be asked to rank the competitors to aid in determining which contestants advance to State in the event there is a tie.**
- **During the State Meet, the judges will be asked to rank the competitors to aid in the event there is a tie.**
- **Points:** Points for each event will be awarded as follows:
 - 1st Place-7 points
 - 2nd Place-5 points
 - 3rd Place-3 points
 - 4th Place-1 point
- A league official or their appointee shall be at every region and state event.
- **Performance Dress:** Students are encouraged to dress modestly for every event at all times in Spring Literary. No uniforms or any clothing that identifies their school should be worn. **All clothing should be modest and semi casual. No jeans, flip flops, or crocs to be worn during performances or awards. Please keep in mind that the stages are often elevated and judges and audience members are below the contestants.**
- **GAPPS Standards:**
(A league official or their appointee can disqualify a performance for any violation)
Recognizing that all we do should honor God, special care should be taken in all selections for content, language, characters, and gestures. Penalties may be incurred for violations at the discretion of the judges and GAPPS officials.
Specific areas of concern:

- No graphic or lewd gestures towards other actors and/or the audience.
- No profanity should be used at all during ANY performance.
- No vulgar humor ever, and please watch/ minimize “low humor”
- **Point Deduction Change**
 - Automatic deductions for broken or unmet competition rules (ex. exceeding the time limit, failure to provide sheet music for judges, etc.) will now be taken in the tab room instead of directly by the individual judges.
 - The judges will be given and asked to review a list of deductions to watch for in their competition. If any are present, they will note those on their score sheet.
 - When the score sheets have been turned into the tab room, the tabulators will take the appropriate deduction(s) from the contestant’s overall point total.
- GAPPS will be recording each interpretation and music performance for the judges to refer back to, in the event there is a question. GAPPS will not be able to distribute this copy. It is solely for the judges use, if there needs to be a review of a play.

Interpretation-Dramatic, Humorous & Duo

- GAPPS will be recording each play for the judges to refer back to, in the event there is a question. GAPPS will not be able to distribute this copy. It is solely for the judges use, if there needs to be a review of a performance.
- **Explanation:** The art of interpretation is to be regarded as recreating the characters in the story presented and making them life-like to the audience.
- **Divisions:** Separate contests will be conducted in Dramatic, Humorous, and Duo Interpretations. Each will be presented as memorized selections, without the use of objects, props, costumes, musical selections, hats, scarves, sound effects, etc.
 - There are no gender restrictions on any competition divisions.
- **Re-Use:** No contestant or school will be allowed to perform the same selection in consecutive years in GAPPS competition.
- **Plagiarism:** In all interpretations, Coaches are encouraged to create a presentation of an original nature and should refrain from imitating a published performance such as one found on YouTube, etc. If a judge recognizes a piece that has been copied from a media presentation that participant will have points deducted.
 - Judges will have 24 hours from Region Competition to look at YouTube and other video streaming sites to determine if there is plagiarism.
- **Disqualification:** A league official or their appointee can disqualify a performance for any and all of the following:
 - Profanity
 - Graphic lewd gestures towards other actors and/or the audience
 - Please pick a subject that could not be construed as awkward or uncomfortable for the opposite sex.

Definitions of a complete script:

- A photocopy of every page from which any line of the cutting is taken. Pages are to be in the order in which they are performed.
- All words used from the script should either be highlighted and all other words left untouched or all words not used crossed out and no highlighting is needed.
- If the entire script is used, no highlighting is necessary.
- Any word changes to eliminate profane language and any additions/subtractions for transition must be clearly marked.
- **Proof of publication provided by the coach or supervising adult:**
 - An original printed source with an ISBN#, ISSN# or IFFN#.

- If these options are not available, then proof that the material was obtained commercially from the author, literary agent or publisher or is publicly available and verifiable for download, purchase or use on the internet by any individual.
- Failure to provide a complete script and/ or original published source can result in a disqualification.

Performance and Evaluation

- **Introduction:** During the presentation, the contestant/ team must name the author and the book or magazine from which the cutting was made. Contestants may recite the title and author of the piece and give a brief introduction of the piece. In interpretation, the teaser must be from the same script or piece as the one being performed.
- **Narration:** If the selection contains narration, either *or* both of the performers may present the narration. Narration, if included, should be vivid and animated so as to be an interesting and integral part of the story rather than just filler between portions of dialogue.
- **Focus:** In both dramatic and humorous interpretation, the use of focal points and/or direct contact with the audience should be determined by the requirements of the literature being presented.
 - In Duo Interpretation, focus may be direct during the introduction (the performers may look at each other), but must be indirect (not looking at the other contestant) during the performance itself. The performers may not touch each other at any time during the performance, nor make eye contact.
 - Performance should be limited to the performance space and performers may not enter the audience at any time during the presentation.
 - All contestants are required to maintain center stage at all times during their performance. (No “box” will be taped out, but “center stage” is understood to be in front of the judges.) Movement is encouraged, but students should never move away from center stage during a performance. If the stage area is elevated then the performers should stay on the elevated part at all times.
- **Evaluation of Performance:**
 - Contestants are evaluated on poise, quality and use of voice, inflection, emphasis, pronunciation, enunciation, physical expression and especially the ability to interpret characters correctly and consistently.
 - The final test of good interpretation is the ability to use all of these factors so successfully and unobtrusively that the hearer forgets that this is a

contest and in a created atmosphere is carried away to the time and place of the story being unfolded.

- **Order of Performances:** At Region and State Competitions, numbers will be drawn at each individual event to determine the order of performance.
- **Timing:** The presentation maximum is 10 minutes. There is no minimum time. Time cards will be used to let the contestants know how much time they have left.
- **Audience:** Audiences will be permitted based on available space in the performance room. Once a performance has started, the doors will be closed and no further entrance will be allowed. There should always be a monitor in the room to maintain control of the exits.
- **Script Submission:** Contestants will hand a copy of the original manuscript, the highlighted photocopy and a script submission form to the monitor of the event at Region and State in order to certify the script. No scripts will be given to the judges unless they ask for it at the end of the performance.
- **Judges:** There will be two judges at each event.
- **Awards:** Medals will be awarded to the contestants who place first in this event.

Selections

- **Sources**
 - Selections must be cuttings from published, printed novels, short stories, plays or poetry. No recorded material that is not published will be allowed. Monologues are acceptable in either interpretation.
 - A cutting must be a single work of literature: one short story or one play or one novel or one or more poems from the same published volume. The original published source must be made available at the event as well as a complete script of the cutting used.
 - The intention of oral interpretation is to interpret a written piece using the performer's voice. Therefore, selections should not be taken from works that are oral in their original format (ex. sermons, speeches, etc.).
- **Adaptations:** Adaptations may only be used for the purpose of transition. The gender stated by the author must be honored. However, a female contestant may play a male role and a male contestant may play a female role.
- **Evaluation of Material:** The selection should be judged for its appropriateness as contest material and its suitability to the particular contestant using it. The use of good literature should be noted favorably and a selection devoid of literary merit graded lowest. Scripts with universal appeal, literary merit and substance will be given more favorable consideration by the judges.
 - It is the responsibility of the coach and participant to determine that the cutting that is being performed meets GAPPS content rules.

Personal Essay

- Each school may enter one (1) contestant. The contestant may be either male or female. Contestants may enter only one essay contest (i.e. Argumentative; Personal; or Rhetorical).
- The GAPPS office will prepare a list of topics for the Region and State Literary competitions.
- All essays will be written in blue or black ink on paper provided by GAPPS.
- Two (2) hours will be given for drafting and writing the essay.
- No other materials, coaching or dictionaries will be allowed in the room.
- The essays will be judged on the following:
 - Originality
 - Form
 - Vividness
 - Voice
 - Style
- Verbal and grammatical correctness, spelling and punctuation will be considered; however, they are of less importance than the interest and general effectiveness of the whole composition. Points will be deducted if there is evidence found of a pre-memorized composition.
- There will be two judges for the essay event. Judges will score and give written comments without discussing with one another or anyone else. Judges will hold all evaluation sheets until after all essays have been scored.
- Essay judges are approved to be off-site in a controlled atmosphere.

Argumentative Essay

- Each school may enter one (1) contestant. The contestant may be either a boy or a girl. Contestants may enter only one essay contest (i.e. Argumentative; Personal; or Rhetorical).
- The GAPPS office shall prepare a list of topics for the Region and State Literary competitions on current state, national and international policies discussed in periodicals published since September 1 of the current school year. The current year and preceding year's debate topics will not be considered.
- The contestants from each school shall write upon any of the subjects provided.
- All essays will be written in blue or black ink on paper provided by GAPPS.
- Two (2) hours will be given for drafting and writing the essay.
- Supplemental published materials will not be allowed. The use of a dictionary and coaching during the contest is not permitted.
- The essay shall be judged by the thought, the order, the arrangement and the elements of style. Verbal and grammatical correctness, spelling and punctuation shall be considered of less importance than the interest and general effectiveness of the whole composition, but should be weighed. It is a ready writer's contest, and evidence of pre-memorized composition shall weigh heavily against the contestant.
- There shall be two (2) judges for this event. Judges shall score and give written comments without conferring with one another or any other person. Judges shall hold all evaluations sheets until after all essays have been scored.
- Essay judges are approved to be off-site in a controlled atmosphere.

Rhetorical Analysis Essay

- Each school may enter one (1) contestant. The contestant may be either a boy or a girl. Contestants may enter only one essay contest (i.e. Argumentative; Personal; or Rhetorical).
- The GAPPS office shall select an excerpt from a work of poetry or prose. Students are to read the passage and write an essay analyzing the narrative and literary techniques and strategies the author uses to achieve his or her purpose in writing the piece.
- All essays will be written in blue or black ink on paper provided by GAPPS.
- Two (2) hours will be given for drafting and writing the essay.
- Neither coaching nor supplemental materials will be allowed. The use of a dictionary during the contest is not permitted.
- The essay shall be judged by the quality of the analysis of elements of the essay including how the writer interprets, develops and organizes the essay, as well as style and correctness.
- There shall be two (2) judges for this event. Judges shall score and give written comments without conferring with one another or any other person. Judges shall hold all evaluations sheets until after all essays have been scored.
- Essay judges are approved to be off-site in a controlled atmosphere.

Spelling

- Each school may enter one (1) contestant.
- Contestants will take a written test consisting of 125 words total provided by the GAPPS league office. The last 25 will be for a tie-breaker only. Words are to be written in ink only. All of the words given in this and the Region contest will come from the online *Merriam-Webster Dictionary*.
- Contestants will not be allowed to use scratch paper to write the word. They will only be allowed to write the word once on their exam paper.
- If the contestant makes an error, they are **not** allowed to start over on a new sheet.
- Contestants are only allowed one sheet of paper for the exam.
- When judges are correcting papers, the following will count as errors:
 - Words written so poorly you cannot read them
 - Any word written with letters written on top of another (ex. a “c” over a “k”)
 - Any words left off
 - Any word that is scratched through, corrected, and/or re-written
 - When a word can be spelled more than one way, the preferred spelling will be the correct spelling of that word. Any variation would be considered incorrect
- The 25 tie-breaker words will only be used in the event of a tie and will only be graded one at a time between the tied individuals until a word is spelled incorrectly.
- The examiner will provide a definition and the word used in a sentence if a contestant asks for either one.
- There will be two judges for this contest. The judge will hold all exams until they are all scored.
- The number of correctly spelled words will determine first, second, third and fourth places.

Piano

- Each school may enter one (1) contestant.
- Each contestant is allowed a one minute warm-up prior to their performance on stage.
- Each host will provide a warm-up room with a tuned piano.
- Each contestant is limited to a 10-minute performance. The time will begin after the first note is played and does not stop between selections.
- If the contestant exceeds the 10-minute time limit, there will be an immediate three points deducted and then two points deducted for every five seconds over the time limit thereafter.
- Contestants will choose two (2) contrasting pieces from the following different genres:
 - Classical
 - Sacred/ Traditional Hymns
 - Patriotic
- Please refrain from using any pop culture or screen music that has been written for piano.
- Pieces will be played from memory. No sheet music is allowed on piano.
- All music must be from published material.
- **Please number measures to make it easier for the judges to score.**
- A contestant will not be allowed to play the same piece in consecutive years.
- **Contestants will provide 2 copies of each piece of music to the judges. One piece MUST be an original and the other can be a photocopy. The photocopy is considered a complimentary copy and MUST be destroyed after competition.**
- If only a photocopy of the music is being provided, the contestant must present a letter from the publisher authorizing duplication. Downloaded music will only be authorized with a proof of purchase.
- Every contestant will only have one chance to perform.
- Audiences will be allowed at this event.
- There will be two judges for this event. The two judges will score and give written comments without discussing with one another and will hold all evaluation sheets until all contestants have performed.
- Judges will score on the following:
 - Accuracy: Notes and time value
 - Technique: Fingering, facility and appropriateness
 - Judges should be in plain sight of pianist.

- Rhythm: Steadiness, tempo and freedom
- Interpretation: Understanding of composition, expression marks, contrast and general effort
- Presentation: Stage deportment, poise and stage personality
- Difficulty of piece

Solo

- Each school may enter one (1) contestant of the appropriate gender in each category: Boys Solo and Girls Solo.
- Each contestant is limited to a seven-minute performance. The time will begin after the first note is played and does not stop in between selections.
- If the contestant exceeds the seven-minute time limit, there will be an immediate three points deducted and then two points deducted for every five seconds over the time limit thereafter.

- Each contestant must perform two (2) contrasting (tempo, mood, key, etc.) pieces from the genre list below.

Genre/Repertoire categories (choose 2 pieces)

- Art song
- Oratorio aria
- Operatic aria
- Traditional Folk/ Hymn
- Broadway musical
 - This **must be** from a professional theatrical staging of the musical. Songs only from the movie or television versions are not allowed. Songs included in both the film and stage versions are permissible, but the contestant should use the theatrical arrangement for their performance.
- Please refrain from using any pop culture or screen music that has been written for solos.
- Songs must be sung from memory.
- Songs should be original vocal solo compositions and not arrangements of instructional or choral pieces.
- All music must be from published material.
- **Please number measures to make it easier for the judges to score.**
- Soloists can sing a capella or use an accompanist. Students may use recorded music **only if** they cannot find an accompanist. The recorded music **must** have only one (1) musical instrument, which must be the only instrument throughout the recording. Also, the school/student is responsible for providing the means to play and hear the recording. (Hosts will not be required to have audio capabilities.)
- Contestants will provide two (2) copies of each piece of the music to the judges. One piece **must** be an original and the other can be a photocopy. The photocopy is considered a complimentary copy and **MUST** be destroyed after competition. Failure to do this will result in a five-point deduction.

- If only a photocopy of the music is being provided, the contestant must present a letter from the publisher authorizing duplication. Downloaded music will only be authorized with a proof of purchase.
- No individual soloist will be permitted to perform the same piece in consecutive years.
- An adult is expressly prohibited from “conducting” during any musical contest at the Region or State levels.
- Audiences will be allowed during performances.
- There will be two judges for this event. The two judges will score and give written comments without discussing with one another and will hold all evaluation sheets until all contestants have performed.

Girls Trio

- A Girls Trio will be made up of three female vocalists and carry the following distinct parts:
 - First soprano
 - Second soprano
 - Alto
- Some vocal sections may be unison or duet, but the majority of the piece (51% or more) should involve singers having their own harmonizing part.
- **The music given to the judges must be written in SSA. These pieces must adhere to copyright laws.**
- **Please number measures to make it easier for the judges to score.**
- Each trio is limited to an eight-minute performance. The time will begin after the first note is played and does not stop in between selections.
- If the trio exceeds the eight-minute time limit, there will be an immediate three points deducted and then two points deducted for every five seconds over the time limit thereafter.
- **Two contrasting selections from the genre list below,** will be sung from memory, each of which shall be appropriate for a small group of singers.
 - Art song
 - Chorale
 - Traditional folk or hymn
 - Madrigal
 - Broadway musical
 - This **must be** from a professional theatrical staging of the musical. Songs from movie or television versions are not allowed. Songs included in both the film and stage versions are permissible, but the contestant should use the theatrical arrangement for their performance.
- **Please refrain from using any pop culture or screen music that has been written for choral groups.**
- Trios can sing a capella or use an accompanist. Students may use recorded music **only if** they cannot find an accompanist. The recorded music **must** have only one (1) musical instrument, which must be the only instrument throughout the recording. Also, the school/student is responsible for providing the means to play and hear the recording. (Hosts will not be required to have audio capabilities.)
- All music must be from published material.

- Contestants will provide two (2) copies of each piece of the music to the judges. One piece **must** be an original and the other can be a photocopy. The photocopy is considered a complimentary copy and MUST be destroyed after competition. Failure to do this will result in a five-point deduction.
- If only a photocopy of the music is being provided, the contestant must present a letter from the publisher authorizing duplication. Downloaded music will only be authorized with a proof of purchase.
- Choreography will be allowed; however, it will not be scored.
- No trio will be allowed to perform the same piece in consecutive years.
- An adult is expressly prohibited from “conducting” during any musical contest at the Region or State levels.
- Audiences will be allowed during performances.
- There will be two judges for this event. The two judges will score and give written comments without discussing with one another and will hold all evaluation sheets until all contestants have performed.

Quartet

- A Boys Quartet will consist of four male voices and carry the following distinct harmony parts:
 - First Tenor
 - Second Tenor
 - First Bass
 - Second Bass
- **Single A schools may compete with a mixed quartet of 2 boys and 2 girls. The music must be written in SATB.**
- Some vocal sections may be unison or duet, but the majority of the piece (51% or more) should involve singers having their own harmonizing part.
- The music given to the judges must be written in TTBB. These pieces must adhere to copyright laws.
- **Please number measures to make it easier for the judges to score.**
- Each quartet is limited to an eight-minute performance. The time will begin after the first note is played and does not stop in between selections.
- If the quartet exceeds the eight-minute time limit, there will be an immediate three points deducted and then two points deducted for every five seconds over the time limit thereafter.
- Two contrasting selections will be sung from memory, each of which shall be appropriate for a small group of singers, **both selections coming from** the following:
 - Art song
 - Chorale
 - Traditional folk or hymn
 - Madrigal
 - Broadway musical
 - This **must be** from a professional theatrical staging of the musical. Songs from movie or television versions are not allowed. Songs included in both the film and stage versions are permissible, but the contestant should use the theatrical arrangement for their performance.
- **Please refrain from using any pop culture or screen music that has been written for choral groups.**
- All music must be from published material.
- Contestants will provide two (2) copies of each piece of the music to the judges. One piece **must** be an original and the other can be a photocopy. The photocopy is

considered a complimentary copy and MUST be destroyed after competition. Failure to do this will result in a five-point deduction.

- If only a photocopy of the music is being provided, the contestant must present a letter from the publisher authorizing duplication. Downloaded music will only be authorized with a proof of purchase.
- Quartets can sing a capella or use an accompanist. Students may use recorded music **only if** they cannot find an accompanist. The recorded music **must** have only one (1) musical instrument, which must be the only instrument throughout the recording. Also, the school/student is responsible for providing the means to play and hear the recording. (Hosts will not be required to have audio capabilities.)
- No quartet will be allowed to perform the same piece in consecutive years.
- Choreography will be allowed; however, it will not be scored.
- Audiences will be allowed during performances.
- An adult is expressly prohibited from “conducting” during any musical contest at the Region or State levels.
- There will be two judges for this event. The two judges will score and give written comments without discussing with one another and will hold all evaluation sheets until all contestants have performed.

Extemporaneous Speaking

- **Divisions:** Separate contests will be held for the United States division and International Division. Schools may enter 1 student per division.
 - United States Division: Covers U.S. domestic and U.S. foreign policy.
 - International Division: Covers the domestic affairs of foreign countries and the foreign affairs of all countries, including the United States.
- **Topics:** The GAPPS office shall prepare a list of topics for both the Region and State Literary competitions on current national and international policies discussed in periodicals published since September 1 of the current school year.
 - The current year and preceding year's debate topics will not be considered.
 - GAPPS will release a list of broad topics two weeks prior to Region competition to assist participants in preparation for extemporaneous speaking events. **All** the competition questions will be related to the broad topics, and some broad topics may encompass multiple competition questions.
- **Explanation Extemp:** The extempore speech should not be regarded as a memory test of the material contained in any one magazine article, but rather as an original synthesis by the speaker of the current fact and opinion on the designated topic as presented by numerous sources. The contestants therefore should be held accountable for strict adherence to the precise statement of the topic drawn and discounted severely for shifting to some other element of the topic on which they might prefer to speak. The information presented should be well-chosen, pertinent and sufficient to support the central thought of the topic. The best extemporaneous speech combines clear thinking, good speaking and interesting presentation to establish a definite thought with respect to the subject chosen.
 - NOTE to Judges: Do not require contestants speaking on a controversial subject to take a personal stand on that issue. Students may do so, or may elect to present both sides of the controversy as currently set forth in the public press. Judge them on the effectiveness with which they develop the subject according to their own plan.
- **Drawing:** At Region and State competition, contestants will draw for positions (1-8) to determine the order of performance. Thirty (30) minutes before the contest is to begin, the first speaker shall draw three topics, choose one and return the other two. The other contestants shall draw in like manner, in the order of speaking, at intervals of seven (7) minutes. The entire list of subjects shall be used for the drawing by each section.

- **Preparation:** As soon as a topic is chosen, the contestant shall withdraw and prepare a speech without consultation and without reference to previously prepared notes. Students may bring and consult published books, magazines, newspapers and journals or articles there from, provided:
 - They are originals or photocopies of the originals.
 - That original article or copy is intact and uncut.
 - There is no written material on that original or copy.
 - Topical indexes without annotation may be present.
- **Prohibited Materials:** Extemporaneous speeches, handbooks, briefs and outlines shall be barred from the extemporaneous preparation room. Underlining or highlighting in extemporaneous speaking will be allowed if done in only one color on each article or copy. No electrical retrieval device (i.e. laptops or electronic devices) may be used. Printed copies of information from “online” computer services may be used. Electronically retrieved evidence used in any NFL contest must conform to the citation standard of the Modern Language Association (MLA). The contest manager should monitor the students during their preparation time to assure that there is no consultation and that only allowable materials are used.
- **Notes:** Contestants may make notes during the preparation time and may use one (1) 3”x 5” notecard handwritten on the front only. This note card will be provided in the Prep Room and must be turned in to the judge after speech.
- **Recusal:** Contestants shall not leave the preparation area until dismissed by the Proctor or Contest Manager. Consultation with any person other than the contest manager between the time of drawing and time of speaking is prohibited.
- **Profanity:** No profanity is allowed when using a quote or any other time..
- **Time Limit:** There is no minimum qualifying time for an extemporaneous speech. Do not penalize a contestant for brevity unless the student fails to adequately cover the subject chosen. Maximum time is seven (7) minutes. Time cards will be used to inform contestants of time remaining and stop time. There is no penalty for slight overtime (up to 30 seconds) to finish a sentence.
- **Podium:** NO podium will be used or provided
- **Audiences:** Audiences are permitted based on space available at the site. Once the performances have begun, audience members are not allowed to enter or exit the performance room during the performances. The contest manager or monitor shall have complete control over entry/exits during performances.
- **Judges:** There shall be two (2) speech judges for this event. Judges shall sit apart during the presentations. They shall score and give written comments without conferring with one another or any other person. Judges shall hold all evaluation sheets until after all the contestants have presented.

Impromptu Speaking (added 2021-22)

- **Entry:** Schools may enter 1 student regardless of gender.
- **Explanation:** Impromptu is a public speaking event where students have seven minutes to select a topic, brainstorm their ideas, outline the speech, and finally, deliver the speech. The speech is given without notes and uses an introduction, body, and conclusion. The speech can be light-hearted or serious. The speech can be based upon prompts that range from proverbs, abstract words/concepts, events, quotations, famous people, Bible, History, Pop Culture, etc.
- **Topics:** The GAPPS office shall prepare a list of general topics for both the Region and State Literary competitions. Each student will have the same. GAPPS will release a list of exact topics to be used two weeks prior to Region competition.
- **Drawing:** At Region and State competition, contestants will draw for positions (1-8) to determine the order of performance. The student will be in the same room as the judges during their draw. The student will pull 3 topics from the envelope handed out by a monitor. The student will then determine their topic.
- **Timing:** The student has a total of 7 minutes for drawing and preparing their speech. At the end of 7 minutes the monitor will require the student to start their speech.
- **Recusal:** Contestants shall not leave the preparation area until dismissed by the Proctor or Contest Manager. Consultation with any person other than the contest manager between the time of drawing and time of speaking is prohibited.
- **Profanity:** No profanity is allowed.
- **Time Limit:** There is no minimum qualifying time for an impromptu speech. Do not penalize a contestant for brevity unless the student fails to adequately cover the subject chosen. Maximum time is seven (7) minutes. Time cards will be used to inform contestants of time remaining and stop time. There is no penalty for slight overtime (up to 30 seconds) to finish a sentence.
- **Podium:** NO podium will be used or provided.
- **Audiences:** Audiences are permitted based on space available at the site. Once the performances have begun, audience members are not allowed to enter or exit the performance room during the performances. The contest manager or monitor shall have complete control over entry/exits during performances.
- **Judges:** There shall be two (2) speech judges for this event. Judges shall sit apart during the presentations. They shall score and give written comments without conferring with one another or any other person. Judges shall hold all evaluation sheets until after all the contestants have presented.

General Speech Rules (Prepared Speech - incorporated 2023-24)

- Speeches must be written and prepared by the student.
- An original work must be presented. Original indicates that the speech is scripted word-for-word by the speaker. Students choose their own topic.
- Plagiarism is prohibited. Both content and delivery should be original work.
- Speeches should be memorized and given without notes or any other physical memory aid.
- Content for all speeches must be in keeping with the GAPPS mission to glorify God.
- Discretion should be exercised when determining material for competition.
 - Humor is permitted as long as it is in good taste.
 - Opinions contrary to those of the judge may be expressed.
 - Dark material is permitted only if it includes a redemptive element.
 - Potentially intense or sensitive speeches should be preceded by the verbal disclaimer: "This speech contains potentially intense or sensitive material."
 - Vulgarity is not permitted. Vulgarity includes inappropriate, obscene or profane language or gestures.
- Gymnastics are not permitted. Gymnastics includes acrobatic type blocking such as flips, cartwheels, "leapfrog," etc.
- Only feet are permitted to touch the floor at any time in all speech events.
- Costumes are not permitted. Costumes include part or all of the speaker's attire worn to enhance the speech.
- Lecterns may not be used.
- Audience members, including judges, may not prompt the speaker.
- Requesting participation from audience members, including judges, is not permitted.
- A pre-show is not permitted. (i.e. rehearsed blocking or additional performance added to the beginning of the submitted, scripted speech.)
- If a student moves on from Region to State, they are to use the same speech at State.
- All speeches should take place at center stage, and speakers should not infringe on the judges' personal space.
- Characterization may comprise up to 150 total words in the speech. Characterization refers to acting or speaking in a manner other than that of the speaker.
- Sources for supporting material must be verbally mentioned in the speech, parenthetically cited in the script, and listed on the Works Cited page.

Supporting material includes direct quotations, specific information, or another person's research, theories or ideas.

- Common knowledge that is known to most people does not need to be cited in any way.
- Visual aids may not be used.
- Prescribed penalties for the following rule violations will be applied by tournament administration and should not be reflected in the judge's original rank:
 - Exceeding the maximum speech time by more than 15 seconds for any speech category will result in a 5-point deduction.
 - Script or note use during platform speeches will result in a 5-point deduction.

Informative & Persuasive Specific Rules

- **Informative Definition:** A speech that intends to educate the audience on a particular topic. The goal is to help the audience understand a subject of the speaker's choice better and to remember what they learned later.
- **Persuasive Definition:** A speech that influences the audience to consider a particular point of view or course of action. The goal is to convince the audience to accept the speaker's point of view on a subject of the speaker's choosing.
- Contestants may be either male or female.
- Speech time is limited to a 10-minute maximum.
- Direct quotations may comprise 350 words of the total words in the speech.

Sermon

High School (Grades 7-12)

Currently being re-evaluated for 23-24 Season

Expository Sermon Specific Rules

- **Definition:** An expository sermon is based on a Scripture passage. The message is grounded in the text so that all of the sermon's points are directly from the text and it focuses on the text's main idea(s).
- There will be separate contests for male and female contestants.
- Speech time is limited to a 15-minute maximum.
- Direct quotations (does not include the Scripture text) may comprise 350 words of the total words in the speech.

One-Act Play

High School (Grades 7-12)

Considerations for One-Act Plays

- 7th-12th grade students are allowed to compete.
- Schools will be divided by 7th-12th enrollment numbers for Class-A & Class-AA.
- A schedule for unloading will be provided by the GAPPS League Office prior to the State competition.
- Schools will have 15 minutes from the time the previous school clears the wings until they should be ready to begin.
- Spiking the stage (adding tape or another form of marking) is prohibited.
- Microphone use by speakers or singers on stage is prohibited.
- Oral critiques will be given at Region for the top two schools moving on to State. No oral critiques will be made at the State competitions.
- Videotaping is permitted only with advanced knowledge and approval of the Event Coordinator or Director. Should permission be granted to videotape, it may only be done with one's own contestant(s) or school. Videotaping of another school's performance is strictly prohibited.
- GAPPS will be recording each play for the judges to refer back to, in the event there is a question. GAPPS will not be able to distribute this copy. It is solely for the judges use, if there needs to be a review of a play.

- **GAPPS Standards:**

(A league official or their appointee can disqualify a play for a violation)

Recognizing that all we do should honor God, special care should be taken in all selections for content, language, characters, costumes, and gestures. Penalties may be incurred for violations at the discretion of the judges and GAPPS officials.

Specific areas of concern:

- No graphic or lewd gestures towards other actors and/or the audience.
- No profanity should be used at all during ANY performance.
- No vulgar humor ever, and please watch/minimize "low humor"
- Please be especially vigilant for dialogue that takes the Lord's name in vain by using it in a flippant or exclamatory manner (ex. "Oh my God!", "OMG!"). If such wording exists in the script you are using, please replace it with a more appropriate substitute. Directors, if you have scenes involving non-scripted/improvised reactions from performers, please work with them in your practices to make sure they are not using

this type of language in their reactions. Any instances in a performance will, at minimum, result in a warning at the Region level and a penalty at the State level.

Contest Rules

- Schools may enter a cutting or abridgment of a play as their One-Act Play selection. There will be NO musicals allowed.
- Proof of performance rights and payment of royalties must be submitted to the Region Literary Chair prior to the Region One-Act Play Competition. Schools performing a cutting or abridgment of a play must also provide written permission from the publisher to cut the play. No play will be allowed to perform without proof of royalties and/or rights paid. GAPPS shall in no way be responsible for any faults that may occur with rights and/or royalties.
- Schools performing original scripts or plays in the public domain shall be exempt from the rule regarding rights and royalties.
- No school shall be permitted to perform the same play selection as that school performed in the year directly previous.
- Schools should choose scripts with universal appeal, literary merit and substance.
- Each school will be given 55 minutes to set-up, perform and strike its production. Any play which exceeds the above time limit will have points deducted. 5 points will be deducted for every minute or partial minute the group goes over the 55 minutes.
- Schools should turn in a cast list with names and characters to a GAPPS official on the day of both Region and State competitions.
- There are no restrictions on costumes, properties and scenery. Properties are defined as any handheld items used on stage apart from the scenery. Scenery is defined as the physical structures used to stimulate an environment set forth in the play, including furniture, platforms, wagons, flats, etc.
- **Prohibited elements:**
 - Anything that would require being attached to the curtain or back of the stage wall
 - Open flames
 - Significant amounts of water or another liquid (If one paper towel can't clean it up easily, it's too much liquid.)
- Timing will be as follows:
 - One student will step onto center stage and announce the school number (order), the name of the play, and an audible "Start Time." The actors may then begin placing items on the stage.

- Once the play has concluded and the stage is cleared, the student will then step back onto center stage and give an audible “Stop Time”. The curtain must be open to ensure all materials have been removed.
 - This time will be recorded on the judge’s evaluation sheets.
- No ineligible person shall be visible on stage in the acting area as part of the production nor shall offer conspicuous direction once the school’s number has been called. This also includes no directors on stage in the acting area to start or stop the play. An adult may be an accompanist on a musical instrument if that person is off stage. An adult may be the lighting and/or sound person.
- If a play is disqualified by GAPPS during competition, the school will incur a fine of \$50.00 from GAPPS.

Judges

- There shall be three (3) judges for this event.
- Judges shall sit apart during the performances. They shall score and give written comments without conferring with one another or any other person. Judges may discuss individual, group and production awards after all performances have been completed and team score sheets have been turned in for tabulations. Judges may confer to choose best actor/actress. In cases of clear inconsistencies in scores, the judges will be allowed to confer to decide on the final rankings. The decision to allow for conferencing will be at the discretion of the GAPPS Fine Arts director.
- Judges shall hold all evaluations sheets until after all schools have performed. The League Official will total the evaluations at the end of all performances. The rankings must be in line with the total scores. The rankings will be averaged for placement.
- Judges shall avoid contact with directors or cast members until after all schools have performed.
- A league official or their appointee will be at every region and state event.

Awards

- The winner and runner-up in Region and State competitions will be determined by the judges’ scores. Judges are asked to rank their results. The rank will be used in the event a tie breaker is needed.
- Champion and Runner-Up trophies will be presented at Region and State.
- At the Region level, plaques or medals will be awarded to the five (5) Best Performances regardless of gender.
- At State competition, an All-State Cast of up to ten (10) actors will be selected consisting of 1 actor from each play plus 2 actors at-large, regardless of gender.

MS One-Act Festival * (New for 2021-22; some rules may change)

Middle School (Grades 5-8)

General Festival Rules

- Schools may enter a cutting or abridgment of a script as their One-Act selection. Musicals are allowed as well as comedy and drama or other genre.
- Proof of performance rights and payment of royalties must be submitted to GAPPS prior to performing. Schools performing a cutting or abridgment of a script must also provide written permission from the publisher to cut the script. No play will be allowed to perform without proof of royalties and/or rights paid. GAPPS shall in no way be responsible for any faults that may occur with rights and/or royalties.
 - Schools performing original scripts or plays in the public domain shall be exempt from the rule regarding rights and royalties.
- No school shall be permitted to perform the same selection as that school performed in the year directly previous.
- Schools should choose scripts with universal appeal, literary merit, and substance. Please no social awareness plays. This should be a fun, engaging, learning experience for all students.
- Each school will be given 45 minutes maximum to perform. (Set up and striking of the stage are not timed).
- After performing, schools will strike the stage and then attend a conference with the judges.
- There are no restrictions on costumes, properties, and scenery. Properties are defined as any handheld items used on stage apart from the scenery. Scenery is defined as the physical structures used to stimulate an environment set forth in the play, including furniture, platforms, wagons, flats, etc.
- **Prohibited elements:**
 - Anything that would require being attached to the curtain or back of the stage wall
 - Open flames
 - Significant amounts of water or another liquid (If one paper towel can't clean it up easily, it's too much liquid.)

- No ineligible person shall be visible on stage in the acting area as part of the production nor shall offer conspicuous direction once the school has introduced their play. This also includes no directors on stage in the acting area to start or stop the play. An adult may be an accompanist on a musical instrument if that person is off stage. An adult may be the lighting and/or sound person. adults may help put out the set before the performance and strike the set after the performance is over.
- GAPPS will be recording each play for the judges to refer back to, in the event there is a question. GAPPS will not be able to distribute this copy. It is solely for the judges use, if there needs to be a review of a play.

Timing/ Order

- **The day will run as follows:**
 - School 1 will set up their stage (should keep that to under 15 minutes, but timing will not start.) Each school will have about 15-30 minutes to set up, walk the stage, and get tech info.
 - When ready, one student will step onto center stage and announce the school number (order), the name of the play, and an audible “Start Time.” The play should then begin.
 - Once the performance has concluded the student will then step back onto center stage and give an audible “Stop Time”. The school may then strike the stage.
 - This time will be recorded on the judge’s evaluation sheets.
 - After striking the stage the next school will set up, walk the stage, and get tech info. The first school will be in a conference with the judges during this time.
- **The exact schedule will depend on the number of schools participating and will be sent out ahead of time to each director.**

Judges

- There shall be three judges for this event.
- Judges shall sit apart during the performances. They shall score and give written comments without conferring with one another or any other person. After each play, the judges will confer to give a rating (Superior, Excellent, Good, or Fair). They will then conference with the students and directors to give suggestions for positive constructive criticism.

Visual Arts

Elementary School (Grades 1-5), Middle School (Grades 6-8), and High School (Grades 7-12)

Entry and Student Eligibility

- Schools may enter a maximum of four (4) pieces per category.
- Students may only enter one (1) piece per category, but may enter all categories in their division.
- The competition will be divided into elementary (grades 1-5) middle school (grades 6-8), and high school (grades 7-12). **Seventh and eighth graders may enter their piece in only 1 division.** Elementary and Middle School will only compete on the Region level (no State competition).
- In 2023-24, Elementary is moving to a Festival Format for Visual Arts

Events

- **Black & White Photography:** Black & white and sepia (12" x 24" max size)
- **Color Photography:** Color, digital, etc. (12" x 24" max size)
- **Painting:** Oil, water, acrylic, etc. (16.5 sq. feet max size)
- **Sculpture:** Three dimensional ceramic, clay, metal, papier-mache, plaster, soapstone, wood, etc. (max height of 6' tall including pedestal, no more than 4' wide) This should be a piece of art, **not** a craft!
- **Pencil/Charcoal Drawing:** Black & White only; pencil, charcoal, pen & ink (18" x 24" max size)
- **Color Drawing:** Color only: pencil, charcoal, pastels, pen & ink (18" x 24" max size)
- **Mixed Media:** A combination of any of the processes above
- **Printmaking:** Entries may be any form of creative prints, including, but not limited to, block print, monoprint, collagraph, serigraph, intaglio, or lithograph. (24" x 36" max size)
- **Expressing Faith Through Art:** Can be presented in any discipline. Students will create a piece from any of the above categories which they feel is a demonstration of their faith.
 - Note: Everyone's faith is expressed in many different ways, thus the artist's statement will be used heavily in the judging process. We do not want to stifle someone's faith, but coaches should not just use this as a catch-all category. There should be real meaning behind the work.
- **Digital Illustration:** Compositions rendered directly on the computer, starting with a blank workspace. Photos can be used as references, but must not be part of

the finished work. (24" x 36" max size) This must be original in concept and work.
Storyboard must be included with your Artist Statement. *(High School only)*

- **Graphic Design:** Art with a commercial purpose, including but not limited to posters, album/CD covers, book jackets, programs, brochures, logos, business cards, advertisements, etc. Copies of previously existing work will not be accepted. Entry purpose should be indicated on the judge's evaluation form. Do NOT use copyrighted material! (24" x 36" max size) Pieces must be mounted to black or white foam core and trimmed to size. **If digitally created, the storyboard must be included with your Artist Statement.** *(High School only)*
- **Reproductions:** This is a study dedicated to learning from the Masters (Picasso, van Gogh, Monet, etc.). Students must use either painting or drawing when copying the Master's work and include the picture of the original with their Artist Statement. (24" x 36" max size) Pieces must be mounted to black or white foam core and trimmed to size. (Open for ES, MS and HS)

General Rules

- Hosts should get judges with a variety of art medium backgrounds.
(Each event will strive to have a total of six judges)
- Knowing that art is very subjective, please be careful of students' content that no works are obscene, sacrilegious, or lewd in any way. Absolutely no obscene material of any kind; use of obscene or sacrilegious material will cause an automatic disqualification
- No special lighting on exhibit
- Mat and faux mats are acceptable. No frames are allowed.
- Projects may be started on June 1 or later of the upcoming school year and must be certified as original works by the school Art Teacher.
- The student and teacher must complete and sign the Artist Statement Form (on website), certifying the art piece was completed by that student.
- We will have Region Art Festivals with the winners from the High School Divisions, advancing to State. GAPPS will determine numbers based on participation.
- Submitted artwork must be original work created by the student. By participating in the GAPPS Visual Arts Competition, students and teachers agree to the GAPPS terms. Even if you have permission to use a work or if the work is in the public domain, the work that you submit to GAPPS must represent a new, original work.
 - If a submitted work is found to have been copied from another artist or is plagiarized, the work will be disqualified from the GAPPS competition.

- EACH 7th through 12th Grade submitted work must have a printed picture of inspired piece or pieces that the artist used as a reference. This needs to include the link(s) where the student found the inspiration and should be referenced in their Student Artist Statement.
- EACH Graphic Design and EACH Digital Illustration must have the storyboard attached to the Student Artist Statement, along with inspiration piece(s).

HOW DO I KNOW IF MY WORK IS ORIGINAL?

Below are some guidelines from the Scholastic Art and Writing Awards website.
(<https://www.artandwriting.org/awards/how-to-enter/copyright-plagiarism/>)

An original work is one that is new and different from what others have created. This means that you are the author of the work, and the work is not copied from someone else's original work. Even if there is no exact or literal copying, but the average person may notice substantial similarities between the submitted work and the source material, it is possible that the work is not considered original and should not be submitted to the Awards.

We understand that artists and writers sometimes create work that references other artists, writers, and popular culture in original and meaningful ways. If your work transforms some sort of source material, then it may be considered original.

We define transformative work as a new work that adds value, substantially changes, comments on, or gives a new expression or meaning to the source. If the submission uses another artist or writer's work as raw material and transforms the original work by bringing new insights and understandings to the piece, it may be submitted to the Scholastic Awards.

Here are some examples of work that should not be submitted:

- A pencil drawing that directly copies a portrait that was taken by another artist is NOT transformative.
- Changing the medium or visual style of another artist's work is NOT considered transformative. For example, a painting or drawing of a photograph taken from the internet or a magazine is not considered original and should not be submitted.
- Creating a painting or digital artwork based on a photo that was taken by someone else does NOT make the work transformative.

- Cropping or resizing an image that a friend created or that you found on the internet does NOT make the work transformative.
- Fan art (such as a painting or drawing of an actor, musician, or preexisting character) or fan fiction is NOT considered original work and should not be submitted.

These examples are simply for guidance and they are not meant to represent all instances of non-transformative work.

If you have any doubt about whether a submission is original, we advise that you choose not to submit that work.

COPYRIGHT & PLAGIARISM PROTOCOL

TIPS FOR PREVENTING COPYRIGHT & PLAGIARISM VIOLATIONS

Educators and students are responsible for educating themselves on copyright and plagiarism issues. This page is only a guide. There is no formula for creating an original work.

For both visual and written submissions, always cite all sources, whether the source is protected by copyright or not.

No percentage of a source can be safely assumed to render a work original.

Educators: if a classroom assignment involves any copying of another artist's work, even if it's just for the purpose of practicing and learning, please direct students not to submit these works.

The Alliance for Young Artists & Writers uses the following definitions for Copyright and Plagiarism:

Copyright is a form of legal protection prohibiting others from copying one's creative work without permission. A copyright is a property right. Copyright law grants the creator of an original work the exclusive rights for its use and distribution.

Plagiarism is an ethical violation resulting from failure to cite sources and engaging in the act of passing someone else's work or ideas off as one's own. This applies even if you have only copied a part, rather than the whole, of another's work.

Trophies & Awards

- Elementary is a Festival Format.
 - Each piece will receive a Superior, Excellent, or Good ribbon
 - Each piece will be given points as follows:
 - Superior - 7 points
 - Excellent - 5 points
 - Good - 3 points
 - Fair - 1 point
- For Middle School and High School: Ribbons will be awarded for the top four pieces in each of the six categories in each Region. Those 24 High School pieces will then travel to the State Competition.
- Each of the 24 pieces will be given points as follows:
 - 1st Place- 7 points
 - 2nd Place- 5 points
 - 3rd Place- 3 points
 - 4th Place- 1 point
- The school with the most points at Region and State will be awarded a first place trophy and the school with the 2nd highest points will be awarded a runner-up trophy.

Academic Arts

GAPPS Elementary Academic Day

Elementary School (Grades 1-5)

Quiz Bowl, Spelling Bee, Math Bowl, Science Fair

- One day event
- Region event only; NO State event for Elementary Competition
- The aim is for no school to be located more than 1.5/ 2 hours away from their assigned Region event

Format of the day

- Morning (*these events will run concurrently*)
 - Quiz Bowl (Team event grades 3-5)
 - Oral Spelling Bee for 1st, 2nd, & 3rd will start once Quiz Bowl is finished
 - Set up Science Fair (interviews may start)
- Lunch Break
- Afternoon (*these events will run concurrently*)
 - Math Bowl (grades 3-5)
 - Awards given at the end of both rounds for all 3 age groups
 - Spelling Bee written for 4th & 5th
 - Awards given at the end of each age group
 - Finish up Science Fair (awards given at the end of the day)

Elementary Spelling Bee

- Individual event for grades 1-5
- A school may send 2 students from each grade (1st, 2nd, 3rd, 4th, & 5th).
- This will be an oral spelling bee for grades 1-3 and written for 4th & 5th using grade-appropriate words and the rules listed in this manual under Spelling Bee. See individual rules for each type.
- Medals will be awarded to the top two placing students in each grade.

GAPPS Middle School Academic Day

Middle School (Grades 5-8)

Math Bowl, History Bowl, Spelling Bee, Geography Bee, Personal Essay

- Each will be a one-day event
- Regions will be located throughout the state. The aim is for no school to be located more than 1.5/ 2 hours away from their assigned Region event
- Winners from each region will compete at the Championship event to be held in Macon.
- All rules for individual events are spelled out later in this manual.

Format of the Day

- TENTATIVE Schedule
 - 8:30 am Arrive and check-in
 - 9:00 am Coaches' meeting for Essay, History, and Math
 - 9:30 am Math & Essay begin
 - 9:45 am History
 - 11:30 am Lunch Break
 - 12:30 pm (or 1 hour after the last event finishes)
 - Math & History Awards
 - Coaches' Meeting for Geo & Spelling
 - 12:45 pm Geo Bee & Spelling Bee begin
 - 3:00 pm (or earlier) Awards for Essay, Spelling, & Geo

Chess

Elementary School (Grades 1-5), Middle School (Grades 6-8), and High School (Grades 9-12)

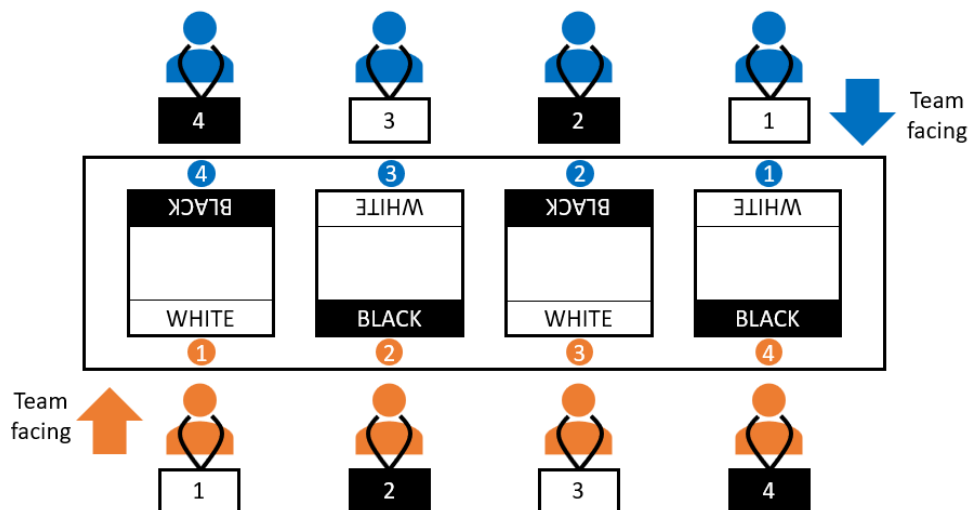
What To Bring

- Two tournament-size chess sets for every team
 - Board: 2 ¼" squares (20" X 20" board)
 - King: between 3 ¾" and 4 ¼" tall
- Two chess clocks (**not** a chess clock app) for every team
- One Coach or another adult per team to act as a table referee/scorer (Must be at coaches' meeting). Table Refs/Scorers may not score their own team nor give advice during the actual match.
- Suggested, but not required:
 - Notepads or chess notation pads for **each** team member
 - Pens for notation
 - Snacks and water for your team

Team Summary

- Each school shall be permitted to enter as many High School, Middle School, and Elementary teams as they want. (There is a cost per team entered.)
There will be no limit to the number of teams allowed at the Region Tournament, BUT only 2 teams per school per division (i.e. 2 ES, 2 MS, 2 HS) may advance.
- Divisions:
 - High School: 7th through 12th grades
 - Middle School: 6th through 8th grades
 - Elementary School: 1st through 5th grades
- Students are permitted to register in higher divisions than their grade but are not permitted to register in lower divisions (i.e., a student in 5th grade may play in Middle or High School divisions, but a student in the 9th grade may not play in Middle School).
- **Students are only permitted to register in one division and cannot change once registered.**
- Each team **must** have a minimum of four (4) players. A team may have up to two (2) alternates.
- Upon sign-in, each player will be given a lanyard, which will note their name, school and school number. They **must** wear their lanyards to every game.
- Player seating for non-playoff rounds shall be as follows:
 - Each table will have four chess sets (setup as shown below).

- Before the round begins and before the team enters the play area, each team will decide which four players (if a team has alternates) will sit at the four table positions by clipping the corresponding number card to their lanyard.



Each player sits in sequential order, lowest to highest, left to right, based on their lanyard. Odds will always be white, evens will always be black. Numbering is for seat position only – not skill level.

- Once a team has made their player and color decisions and has entered the play area, those decisions are set for the round. Players may not change their positioning once they observe their opponent's positioning.
- Only players who are designated to play in a round may enter the play area. Alternates, coaches and parents are **not** permitted in the play area.

Event Summary – Region

- The region tournament will be a round robin amongst the teams represented (approximately five-seven rounds). The goal is to have no more than 8 teams per region per division.
- If there are fewer than 5 teams in a division, then after the round robin rounds the teams will play a mini-playoff for final seeding.
- A bye will be issued to a team if there are not enough teams available in a round to pair teams evenly (either by the number of teams registered or a change in a team's availability throughout the day due to an emergency.) In that case, teams issued a bye will receive 5 points. (Note: At the end of the day the bye could be increased to 6 or 7 based on the average score a team achieves. This is not automatic and is based on the judgment of the circumstances involved.)

- If a school has multiple teams (for example #1 , #2 and #3) the first team to get a bye would be #3, then #2 and then #1. A school's #1 team would receive a bye only if there were no other options to pair in the tournament.
- Team pairings and table designations for all rounds will be pre-selected at random, based on prior team registration. Modifications to this schedule will only be made if a team is not (or is no longer) available to play (ex. a late arrival or an emergency requires the team to withdraw from the event early). In this case, the event administrator will adjust the team pairings schedule to limit the number of byes issued.
- Each team's score for the round is the sum of the result of all round robin games:
 - Each win scores two (2) points
 - Each draw scores one (1) point
 - Example: If a team wins two games, loses one, and draws one, that team would score 5 points for that round. The other team would score 3 points for that round (two losses, one win, and one draw)
- At the end of the region rounds, the teams will be ranked from highest to lowest scores. A designated number of teams will move to the state tournament.
- Ties are broken by calculating the team's "Strength of Schedule," calculated by totaling the number of points scored multiplied by the final resulting position of each opponent, ranked lowest to highest.

Event Summary – State

- The top twelve teams (for High School, Middle School, and Elementary School) from Region will be invited to the State Competition.
- The teams will be divided into 2 groups and seeded from 1st-6th in each group.
- Play for the first 5 rounds will be round robin within the team's grouping.
- At the conclusion of round robin rounds, all players who have won **all** of their played games (winning 5 for 5) will be awarded an "Undefeated" medallion.
- The top 2 teams from each grouping will move to the playoffs. (Semi-finals and Finals)
- In the playoff rounds, seat selection will go as follows:
 - Teams will identify which players are participating in the playoff round by clipping a number card to their lanyard. In this round, the colors of the cards do not matter. However, ties are broken in this round by game number (not seat). The #1 game is the first tie breaker, followed by game #2, #3 and #4.

- Once both teams have their numbers set, player 1 from the higher seed sits at game board 1 and chooses the color they wish to play. Player 1 from the lower seed sits across from them.
- Next, player 2 from the lower seed sits at board 2 and chooses the color they wish to play. Player 2 from the higher seed sits across from them.
- Next, player 3 from the higher seed sits at game board 3 and chooses the color they wish to play. Player 3 from the lower seed sits across from them.
- Finally, player 4 from the lower seed sits at board 2 and chooses the color they wish to play. Player 4 from the higher seed sits across from them.
- As colors are selected individually, it is possible that one team may play white more than twice. That is the prerogative of the players.
- The round will score in the same way they were scored during Part 1 of the tournament. Each win is worth two (2) points, and draws are worth one (1) point.
- Ties will be broken in the following order:
 - The winner at board 1
 - The winner at board 2
 - The winner at board 3
 - The winner at board 4
 - A single game of blitz chess (5 minutes per side). Each team will select one player to participate in the game. Color will be chosen by lots.
- The winners of the semi-finals round will then play a final round in the same manner, resulting in first and second place in the event. The losing teams of the semi-final round will play for third and fourth place of the event.

Game Play Rules

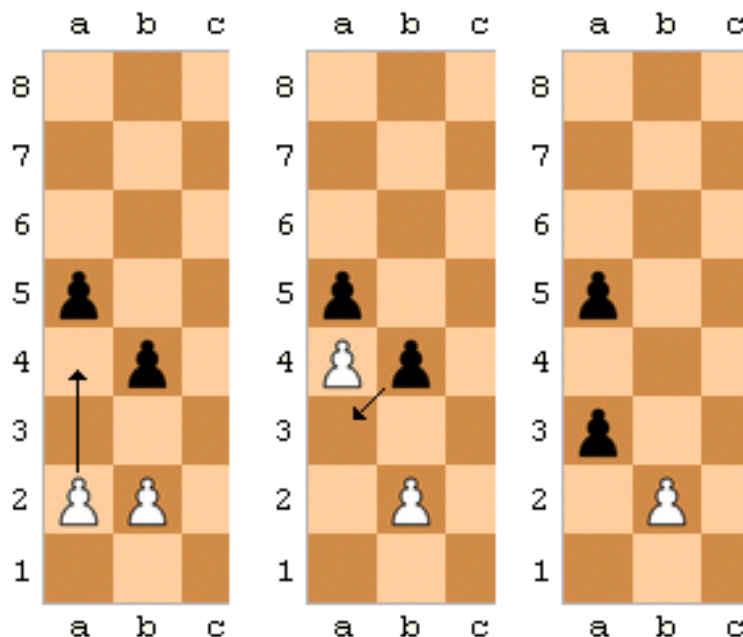
- Each game **must** use a chess clock. Chess timers are set at 20 minutes per player
- Each game may be notated by either or both players, either in a notebook or USCF-approved electronic notation device. Notating apps on a tablet or phone are **not** permitted.
- All electronic devices must be turned **OFF** while in the chess play area. Any player using a phone or tablet after being instructed to turn them off by the head referee may be asked to forfeit that match. This decision is at the discretion of the head referee.
- Play will begin for the round when announced by the head referee.
- There is no talking between team members during the round.
- Players will follow the “touch” rule.
 - A player may only touch the board or a piece on their turn.
 - If a player touches a piece and the piece can be moved legally, They must move it.

- A piece that is off-center may be adjusted if the player first asks the opposing player.
- A player may never touch their opponent's pieces, unless it is to remove one from the board after capturing it.
- There is to be minimal talking between opposing players during a match.
- If a player has any question about a move, the state of the board or has any issue with their opponent's play etiquette, they are to raise their hand and request help from the table referee.
- If a referee acknowledges a mistake on the game board (such as an undiscovered check), he will use the game notation to reverse moves back to where the mistake occurred. If there is a discrepancy between the two notations, the referee will reverse moves back at their discretion.
- Referee's decisions are final. If a player is causing a disruption, purposefully tipping boards or attempting to cheat in any way, the referees will instruct that player to leave the play area, and they will forfeit the match.
- A game is over under **ANY** of the following conditions:
 - A player loses by checkmate or resignation, in which that player's king has no legal move and is in check. In this state, the opponent wins and scores two (2) points and the player earns zero (0) points.
 - A game is a draw. In this state, both players score one (1) point.
 - One of the player's board position is repeated three consecutive turns
 - One player has only a king, and the other player is unable to get them in checkmate after 50 moves.
 - The head referee may also issue a draw if they determine that players are unable to get a win with the pieces remaining.
 - A player's clock expires, meaning that player has run out of time. In this state, the opponent wins and scores two (2) points and the player scores zero (0) points.
 - Exception: If a player only has a king and their opponent still has pieces to make checkmate but runs out of time first, this game is scored as a draw.
- Once a game is completed, the players will raise their hand to call for a referee to record the results. Once the results are recorded, the players must leave the playing area.

Special Movement Definitions

- **King-side castling:** The king may move two spaces toward the king-side rook and the rook can move to the space immediately to the left of the king if all the following are true:

- The king hasn't been moved previously
- The king-side rook hasn't been moved previously
- There are no pieces between the king and rook
- The king doesn't move through or into check when moving two spaces toward the king-side rook.
- **Queen-side castling:** All rules are identical to king-side castling, with the following differences:
 - The king moves two spaces toward the **queen-side** rook.
 - The queen-side rook is moved to the space immediately to the **right** of the king.
- **En Passant:** This is a special pawn capture move, both explained and illustrated below:
 - A player performs the two-space move off a pawn's starting space.
 - An opponent's pawn is on the fifth rank and on a file adjacent to the pawn that was **just moved** two spaces.
 - If both above statements are true, the opponent may capture the pawn as if the pawn had only moved one space.



Essay (Personal)

Middle School (Grades 6-8)

- Each school may enter one (1) contestant. The contestant may be either male or female.
- The GAPPS office will prepare a list of topics for the Region and State competitions.
- All essays will be written in blue or black ink.
- One (1) hour will be given for writing the essay.
- No other materials, coaching or dictionaries will be allowed in the room.
- The essays will be judged on the following:
 - Originality
 - Form
 - Vividness
 - Voice
 - Style
- Verbal and grammatical correctness, spelling and punctuation will be considered; however, they are of less importance than the interest and general effectiveness of the whole composition. Points will be deducted if there is evidence found of a pre-memorized composition.
- There will be two judges for the essay event. Judges will score and give written comments without discussing with one another or anyone else. Judges will hold all evaluation sheets until after all essays have been scored.
- The sum of the two judges' point totals will determine winners.
- Essay judges are approved to be off-site in a controlled atmosphere.

Geography Bee

Middle School (Grades 6-8)

General Information

- Only participants in grades 6th-8th are allowed.
- Geography Bee will be held during the Middle School Academic Days for Region competition.
- Schools may send up to 6 students to the Region event.
- Questions will be read and answered using the computer program Socrative.
Each student will need to have their own device (computer, phone, ipad, etc.) with internet connection availability. Region hosts should have a few extra to help out and have Wi-Fi service available for each student.
- One round of 36 questions will be played for all students simultaneously.
 - The questions will be broken down as follows:
 - 12 American Geography
 - 12 World Geography
 - 12 Bible Geography
 - Each question will have four answers to choose from, of which only one answer is correct (no “all of the above” or “none of the above” questions will be included).
 - Each answer is numbered 1-4, and each student will need to select the coordinating number on the computer or electronic device.
- The top 12 students with the highest scores will proceed to the semi-finals. If there are ties in the top 12, then more than 12 can proceed to the semi-finals.
- Semi-final questions will consist of 15 questions, broken down equally between American Geography, World Geography, and Bible Geography
- The top six students with the highest scores will proceed to the Final Region Championship Round as well as the Championship for MS Geography Bee in the State Competition. No ties are allowed in the top six; a single elimination round will be played to decide the positions for the tied spots.
- The final round will be in 2 stages: In stage 1, nine questions will be asked. Students will be placed according to their correct answers. Ties will move on to the “Process of Elimination” round within position. For example, students tied for 2nd will be competing against each other for 2nd and 3rd respectively.
- The top six scorers of the Region Competition will receive a medal and move onto State.

Geography Bee Flow

The Host School

- The Host School will need 1 large room set up for Region competition.
- The room must contain tables and chairs for the contestants and a Moderator's table with three chairs.
- The Host School is encouraged to ask the participating schools in their region to provide Moderators for this event.
- The Host School may use people from their school's administration to act as Moderators.

The Moderator

- There will be one Moderator for each competition room.
- The Moderator will introduce the teams and explain the flow of the Geography Bee.
- The Moderator will read aloud the questions and answers once in the order in which they have been presented.
- Once the Moderator has finished reading the question and 4 possible answers, he/ she will say "ANSWER," and the students select their answer on their device.
- Once all students have answered, the moderator will move to the next question.
- The Moderator will then proceed with the next question until the end of the round.
- There will be a 3-5 minute break between rounds to double check scores, before moving forward.

Room Monitors

- The Room Monitors are responsible for welcoming the students and observers in the room in an orderly fashion and seating the students at their tables with a device.
- The Room Monitors will walk the room to make sure all students are on Wi-Fi and are not looking at other devices.
- They will assist the Moderator with any questions that may arise.

Championship

- The Championship will be hosted by GAPPS at a Middle School Academic Championship Day. It will comprise of each region's top six scorers.
- The top six places will receive a championship medal.

History Bowl

Middle School (Grades 6-8) and High School (Grades 7-12)

Teams

- Teams will consist of a minimum of three (3) students, with a maximum of five (5) playing at a time.
- Teams are allowed to make substitutions in between periods.
- If there is room, a school may have an additional History or Math Bowl team (for an additional fee) as long as the first team has at least 5 players. Players cannot switch teams during that day's tournament. Team rosters will be submitted to the coordinator/ host two weeks before the first tournament.
 - o A school may only advance one (1) team to State Competition. At that point, any of their students listed on their overall roster is eligible for the State team.

Matches

- There will be 3 rounds per match:
 - o **Round 1 (Toss-up):**
 - Ten toss-up questions made up of 2 Biblical, 4 American, and 4 World History.
 - The questions will be called out, and team members will buzz in to answer. Any team member may answer. A team receives ten (10) points per correctly answered question.
 - o **Round 2 (Speed):**
 - The team that is behind in points will be allowed to choose between two (2) categories. (Note: If no team is behind then a coin toss is used to determine first pick.) Then they will have 120 seconds to answer ten (10) questions from that category. The other category will be for the other team.
 - Only answers from the captain will be accepted, but all team members may call out answers to the captain.
 - All questions answered incorrectly will go over to the other team at the end of the allotted time and thus may be “stolen”. The stealing team will be given one (1) minute to “steal” questions.
 - After the first team's questions are completed, the other team will have their set of questions, with incorrect answers allowed to be “stolen”. The stealing team will be given one (1) minute to “steal” questions.

- *Special note:* Questions not called out by the Moderator cannot be “stolen”; however, if in the opinion of the Moderator a team makes little to no effort to attempt to answer the questions, then **all ten (10)** questions will be given to the other team.
 - Teams receive five (5) points per correctly answered question.
 - o **Round 3 (Bonus):** Six toss-up questions made up of 2 Biblical, 2 American, and 2 World History, with 2 related bonus questions for each correctly answered toss-up question.
 - If bonuses are answered incorrectly, they will be bounced back to the other team for an opportunity to answer. Teams receive ten (10) points per correctly answered toss-up and bonus question.
- Each match will generally last 25-30 minutes.
- Teams will play three (3) matches of Pool Play then the top 4 teams will move to the Semi-Final match. The top two teams will play head to head in the Final match.
- Teams may substitute students only between rounds.

General Rules

- Each team will supply their own buzzer system at Region and State meets, if needed.
- Seventh through twelfth grade students are eligible for High School Competition, and special requests will be considered for sixth graders.
- All teams will compete in Region. (The High School division will consist of only a State tournament unless participation warrants a change.) GAPPS will determine how many teams go to State based on participation.
- GAPPS will purchase all Region and State questions and supply Region hosts with the questions and format.
- Score checks will be made between each period, and each coach/ captain may request one additional score check per round.
- Cell phones or other electronic devices are to be turned off by all players, spectators and coaches during competition.
- Reference books, text books, magazines, etc. are not permitted during competition.
- Each school will supply their own paper and pens/ pencils for competitions.
- At no time will opponents display any unsportsmanlike conduct towards each other. The Moderator will deduct ten (10) points after the first warning to the team displaying the unsportsmanlike conduct.
- Buzzer systems can be found at:
www.andersonbuzzersystems.com/productoverview.html

Toss-up Question Procedures

- Players from either team may answer the toss-up questions.
- Players must buzz in within five (5) seconds of the end of the question being read.
- Players have three (3) seconds to answer once the Moderator has recognized them.
- Toss-up questions are only read once.
- If a completed toss-up question is answered incorrectly by the first team, the opposing team may still buzz in within five (5) seconds and attempt to answer.
- If a toss-up question is interrupted and answered incorrectly, the reader will pick up at a logical place and finish the question for the opposing team only.
- No points will be subtracted if the interrupted toss-up question is answered incorrectly.
- There will be no pauses, nor will a break be allowed, while answering a toss-up question.
- On toss-up questions, players may only engage in non-verbal, non-written conferral with teammates only (no spectators, alternates, coaches) as long as it does not involve conveying the answer.
- If the Moderator accidentally provides the correct answer on a toss-up question after the incorrect answer is given, that toss-up question will be eliminated and another toss-up question will be given to the opposing team only.

Bonus Question Procedures

- When answering a toss-up question correctly, the team earns the first opportunity to answer a two-part bonus question.
- Players on both teams may consult one another during bonus questions for five (5) seconds, unless it is a math computation question, in which case, 15 seconds is allowed.
- Each part of the bonus question will be read only once and must be answered before moving on to the next part of the question.
- Team captains will answer bonus questions unless the captain designates another team member to answer. Answers must still be given within the 5-second answer time.
- If someone other than the team captain is giving an answer without the captain's permission, the Moderator will look directly at the captain and ask for an answer. If someone hits the buzzer, it will still be up to the captain to answer.
- Each bonus part answered incorrectly or not answered by the team earning the bonus will be bounced back immediately to the opposing team. The opposing team

captain must answer within three (3) seconds after the Moderator offers the bonus to him/her. If the captain defers, the answer must be given immediately by the player to whom the captain defers.

- If the Moderator accidentally provides the correct answer on a bonus question after the incorrect answer is given, that bonus question will be eliminated and another bonus question will be given to the opposing team only.
- A player may give two (2) pieces of information in relation to the “creator-creation” rule.
 - Example: *The Great Gatsby* is one answer; *The Great Gatsby by F. Scott Fitzgerald* are two answers and is correct according to the rule.
- Each bonus question is worth 10 points per part, for a total of 20 points.

Ties Within A Round

- Ties within a round will be settled by extra toss-ups (as in period 1). One toss-up question will be read at a time until a team scores to end the round.

Protests

- Protests must be communicated verbally by either the Coach or team captain and must be settled before the round progresses to the next toss-up question.

Overall Ranking

- Win-loss record
- Head-to-head (for tied teams)
- Total points (for tied teams)

Math Bowl

High School (Grades 7-12)

Middle School (Grades 5-8)

****Math Bowl is a team event.****

Divisions

- High Schools will be split into 2 classes and play on separate days.
 - AA (Larger Schools): ALL schools would typically be designated AA in Arts & Academics by the number of students in HS.
 - A (Smaller Schools): All schools designated A by HS numbers.
- Middle School competition is not split into divisions
- Schools may bring more than one team to a competition with the following constraints:
 - Middle School Regional Competition
 - Depending on space available, schools may bring additional teams with the approval of the *GAPPS Arts & Academic Director*. Additional teams must pay the appropriate fee for their team to compete. Only one team per school may advance to the state competition.
 - Depending on space available, schools may bring additional teams to AUDIT the competition with the approval of the *GAPPS Arts & Academic Director*. These teams will not be required to pay the registration fee. Team competition tests will not be scored. An answer key along with completed contests will be returned to the team coach for them to score.
 - High School
 - Depending on space available, schools may bring additional teams with the approval of the *GAPPS Arts & Academic Director*. Additional teams must pay the appropriate fee for their team to compete.
 - Depending on space available, schools may bring additional teams to AUDIT the competition with the approval of the *GAPPS Arts & Academic Director*. These teams will not be required to pay the registration fee. Team competition tests will not be scored. An answer key along with completed contests will be returned to the team coach for them to score.
 - We are trying to keep this a 1-day tournament but also allow it to grow. When we run out of room again, we will adjust again.

Team Composition

- Students in grades 5 through 8 must be on a Middle School team
- Students grades 9 through 12 must be on a High School teams
- Students in grades 7 and 8 may “play up” on a High School Division team but under no circumstance will 9th-12th grades be permitted to “play down” to the Middle School Division.
- Teams must have a minimum of 3 and no more than 4 students.
- Teams are allowed to make substitutions between rounds.
- A school must have a team of 4 before adding an additional team (see Divisions above for information regarding additional teams.)
- Team rosters are final once competition has begun. Team rosters should be given to the coordinator/host of the day’s tournament. Competitors cannot change teams during the competition.
- A school may only advance one (1) team to State competition. At that point, any of their students listed on their overall roster are eligible for the State team.

Competition (HS & MS)

- A competition will be four rounds as described below. All the teams at the event will be given the same problems at the same time. Schools are not competing against just the teams in their room, but against all the teams at the event.
- Calculators are allowed only in rounds 3 & 4. Graphing and scientific calculators are allowed. Other digital devices or calculators with a QWERTY keypad are NOT allowed.
- All units of measurement will be indicated in the answer blank (in plural form, even if the answer is singular) on the answer sheet for questions where appropriate. Competitors will not have to provide the unit of measurement to receive credit for the question. If there is no unit of measurement for a question, then the answer blank will not have one.

Round 1 – Team Warm-up Round (10 Questions Total, Easy-Medium Level)

- Time: About 30 minutes (10 points)
- Format: Students will sit by team, with one miniature marker board each team. A question will appear on a PowerPoint slide, and the teams will be given 2 minutes to quietly discuss the question and put a final answer on their markerboard. Each question correct will contribute 1 point to the overall team score. This round is meant to be a fun warm-up round.

Round 2 – Individual Testing Round (20 Questions Total, Easy-Medium Level)

- Time: 30 minutes (20 points)
- Format: Students will be given a 20-question written test to take individually, and they will have 30 minutes to complete. Each question will contribute 1 point to the student's individual score.

Round 3 – Individual Ciphering Round (10 Questions Total, Medium-Hard Level) – Calculator Allowed

- Time: About 40 minutes (20 points)
- Format: Students will be given five 2-question written tests, one at a time, to take individually, and they will have 6 (5 for middle school) minutes to complete each test. Therefore, students will be given #1-2 for 6 (5 for middle school) minutes, then #3-4 for 6 minutes, etc. Each set of 2 questions will contain one medium and one hard question. Each question will contribute 2 points to the student's individual score.

Round 4 – Team Round (10 Questions Total, Medium-Hard Level) – Calculator Allowed

- Time: 30 minutes (20 points)
- Format: Students will be allowed to collaborate as teams for this round. Each question will contribute 2 points to the overall team score.

Break: A 3-5-minute break will be taken between each round. At this time, coaches may make substitutions and talk to their students.

Rooms

- Hosts are to be sure that there is enough space for more than one (1) team per room.
- Teams should be able to work quietly together but remain mindful that other teams are in the room, and they could be overheard.
- A representative from GAPPs or a school that is not competing in the room will be the Moderator for the room.

Scoring

- Between rounds, the Answer Sheets will be given to the Scorers.
- Each contest should be graded two times by two different teachers from two different schools. Preferably a coach or teacher would not grade their own team's contest. A GAPPs representative will also "grade" the Answer Sheets.

- A running total of points will be kept.

Winner

- Team scores will be tallied as the sum of the following four components::
 - Round 1 – Total points accumulated by team (max 10 points)
 - Round 2 – Average of top 3 scores, low score dropped from calculation (max 20 points)
 - Round 3 – Average of top 3 scores, low score dropped from calculation (max 20 points)
 - Round 4 – Total points accumulated by team (max 20 points)
- The highest score that any team could score is 70. If two teams tie in their total score, the team with the most points from Round 4 will be declared the winning team. If the two teams are still tied, the highest averages from Round 2 will be declared the winning team.
- The team with the most total points will be declared the Champion and receive a trophy. The second-place team will be declared the Runner-Up and receive the runner-up trophy.
- The top 2 scoring individuals will be awarded medals.
- This arrangement will be the same for both High School and Middle School.
- Tiebreaker: **TBD**

Elementary Math Bowl

Upper Elementary School (Grades 3-5)

- Individual and team event for grades 3-5 consisting of two (2) rounds.
 - **Round 1: Individual Quiz**
 - Each student will take the same individual quiz (20 questions). Students will have 30 minutes to complete the quiz. This must be done individually with no communication between students and coaches at all.
 - The individual quiz will be a combination of computational and reasoning questions.
 - Correct answers will score 1 point each. The average of the top three (3) scores from each team will count in the overall score.
 - **Round 2: Team Quiz**
 - The 4-student team will be given 20 problems to solve. They will have 30 minutes in which to solve the quiz. The team may work together or separately to solve the problems, but only one (1) answer sheet per team will be turned in.
 - The team quiz will consist mainly of reasoning questions. Complex computation may also be included.
 - All answers will be turned in on an “Answer Sheet” with the team’s name clearly written on it. All work should be stapled to the back of the answer sheet.
 - Correct answers will earn 1 point each. No partial credit will be given.
- A school may send four (4) students from each grade (3rd, 4th, & 5th).
- The students will take two (2) grade-appropriate tests, allowing 30 minutes per test with a short break between the two.
- Medals will be given to the highest scorer per grade.
- Tiebreaker: TBD

Quiz Bowl

Middle School (Grades 6-8) and High School (Grades 7-12)

Teams

- There will be both a high school and middle school division.
 - A middle school team is defined as a team with students from 6th to 8th grades.
 - A high school team is defined as a team with students from 7th to 12th grades.
- Teams will consist of a minimum of three (3) students, with a maximum of five (5) competing at a time.
- Teams are allowed to make substitutions at halftime (after eight questions).
- For an extra fee, a school may have an additional Quiz Bowl team as long as the first team has at least five (5) players. Players cannot switch teams during that day's tournament. Team rosters will be given to the coordinator/host of the day's tournament.
 - A school may only advance one (1) team to State competition. At that point, any of their students listed on their overall roster are eligible for the State team.

Divisions

- Schools will be split into 2 divisions:
 - AA-Larger Schools and/ or advanced schools: This will include ALL schools that would typically be designated AA in Arts & Academics by the number of students in HS as well as include all schools that participate in multiple NAQT events and are considered Advanced schools. The number can change on an every other year basis and schools may ask to join this division (play up).
 - AA Division will have region tournaments to advance to State.
 - AA Division schools may field multiple teams per grade category (HS/ MS), but only 1 team per school may advance to State.
 - A-Smaller Schools or Novice Division: This would include all schools designated A by HS numbers.
 - The A Division will have region tournaments before State.
 - The A Division schools may field multiple teams per grade category (HS/ MS), but only 1 team per school may advance to State.

Matches

- There will be 16 toss-up questions per round, plus a two-part bonus question for each correctly answered toss-up. If bonuses are answered incorrectly, they will be bounced back to the other team for an opportunity to answer.
- Competitions will be set up as round robins, unless otherwise stated.
- Each round will generally last 25-30 minutes.

General Rules

- Each team will supply their own buzzer system at Region and State competition if needed.
- All teams will compete at Region. GAPPs will determine how many teams go to State based on participation
- GAPPs will purchase all Region and State questions from the NAQT and supply Region hosts with the questions and format.
- Score checks will be made at halftime. Each coach/team captain may request one additional score check per round.
- Cell phones or other electronic devices are to be turned off by all players, spectators and coaches during competition.
- Reference books, calculators, etc. are not permitted during competition.
- Each school will supply their own paper and pens/pencils for competitions.
- At no time will opponents display any unsportsmanlike conduct towards each other. The Moderator will deduct ten (10) points after the first warning to the team displaying the unsportsmanlike conduct.
- Buzzer systems can be found at:
www.andersonbuzzersystems.com/productoverview.html
- Study questions can be found at: www.naqt.com/YouGottaKnow

Toss-up Question Procedures

- Players from either team may answer the toss-up questions.
- Players must buzz in within five (5) seconds of the end of the question being read, unless it is a math computation question, in which case, players must buzz in within 15 seconds of the end of the question.
- Players have three (3) seconds to answer once the Moderator has recognized them.
- Toss-up questions are only read once.
 - If a completed toss-up question is answered incorrectly by the first team, the opposing team may still buzz in within five (5) seconds and attempt to answer.

- o If a toss-up question is interrupted and answered incorrectly, the reader will pick up at a logical place and finish the question for the opposing team only.
 - o No points will be subtracted if the interrupted toss-up question is answered incorrectly.
- There will be no pauses or breaks allowed while answering a toss-up question.
- On toss-up questions, players may only engage in non-verbal, non-written conferral with teammates only (no spectators, alternates, coaches) as long as it does not involve conveying the answer.
- If the Moderator accidentally provides the correct answer on a toss-up question after the incorrect answer is given, that toss-up question will be eliminated and another toss-up question will be given to the opposing team only.
- A player may give two pieces of information in relation to the “creator-creation” rule.
 - o Example: *The Great Gatsby* is one answer; *The Great Gatsby* by F. Scott Fitzgerald are two answers and is correct according to the rule.
- Each toss-up question is worth ten (10) points.

Bonus Question Procedures

- When answering a toss-up question correctly, the team earns the first opportunity to answer a two part bonus question.
- Players on both teams may consult one another during bonus questions for five (5) seconds, unless it is a math computation question, in which case, fifteen (15) seconds is allowed.
- Each part of the bonus question will be read only once and will be answered before moving on to the next part of the question.
- Team captains will answer bonus questions unless the captain designates another team member to answer, but answers must still be given within the 5-second answer time.
- If someone other than the team captain is giving an answer without the captain’s permission, the Moderator will look directly at the captain and ask for an answer. If someone hits the buzzer, it will still be up to the captain to answer.
- Each bonus part answered incorrectly or not answered by the team earning the bonus will be bounced back immediately to the opposing team. The opposing team captain must answer within three (3) seconds after the Moderator offers the bonus to them. If the captain defers, the answer must be given immediately by the player to whom the captain defers.

- If the Moderator accidentally provides the correct answer on a bonus question after the incorrect answer is given, that bonus question will be eliminated and another bonus question will be given to the opposing team only.
- A player may give two pieces of information in relation to the “creator-creation” rule.
 - Example: *The Great Gatsby* is one answer; *The Great Gatsby* by F. Scott Fitzgerald are two answers and is correct according to the rule.
- Each bonus question is worth 10 points per part for a total of 20 points.

Ties within a Round

- Ties within a round will be settled by extra toss-ups. One toss-up question will be read at a time until a team scores to end the round.

Protests

- Protests must be communicated verbally by either the coach or team captain and must be settled before the round progresses to the next tossup question.

Overall Ranking

- Win-loss record
- Head-to-head (for tied teams)
- Total points (for tied teams)

Robotics

Middle School (Grades 6-8) and High School (Grades 7-12)

****The purpose of this document is to give you general guidelines and procedures for how the Robotics Competition will work so that you can be prepared for the season. This document will NOT provide instructions to complete the robot, nor the rules of the competition.****

Divisions

- We will have both a high school and middle school division.
 - A middle school team is defined as a team with students from 5th to 8th grades.
 - A high school team is defined as a team with students from 7th to 12th grades.
 - High school students (9th through 12 grades) can **only** compete at the high school division level, while middle school students can compete at either the high school or middle school division level.
 - A student can only register to compete in **one** division.

Teams

- A team may consist of 2-6 students. Experience has shown that 3-4 students per team is a good size.
- Each team must have its own robot; teams may not share robots during competition.
- Schools may have more than one team. Each school that registers by the registration deadline is guaranteed up to two high school teams and two middle school team slots in the competition. More competition slots may be available after the registration deadline on a first come, first-served basis.

Kick-Off Event

- The Kick-Off event will be a day-long event in which the specific rules for the year's competition, game board design and scoring will be announced. Kick-Off is designed to be a fun event where mentors and students come together to get to know each other and have questions answered, view the game board and learn the competition rules.
- There is no competition during Kick-Off.
- Kick-Off needs to be as early as possible in the school year but no later than 6 weeks prior to Competition.
- It may be beneficial to bring your robotics kit and laptop (and possibly an extension cord and power strip) to Kick-Off. There are always people willing to help new schools get started.

Competition

- We will have a competition for both middle and high school divisions. A competition is a day-long event in which the teams from the schools compete for both team and school awards.
- The matches will run as follows:
 - Each team will participate in a minimum of four placement matches.
 - The top eight teams will compete in an elimination tournament to determine the placement. The elimination tournament will begin with two matches consisting of the 1st, 2nd, 7th and 8th teams and the 3rd, 4th, 5th and 6th teams competing against each other.
 - The top two from these matches will compete in a final match for 1st, 2nd, 3rd and 4th place.
- The object of the competition is to score as many points as possible during each run of each match using programmed autonomous robots to place the scoring elements on the game board according to the competition rules.
 - There will be multiple ways to score, and an objective of the teams will be to determine the best strategy to score points using scoring zones, multipliers and bonus objectives using effective design, engineering and programming of their robot.
 - Scoring methods will vary in complexity and most (if not all) will be designed to be accomplished with the use of a maximum of two sensors and simple programming decisions that can be accomplished with the included software of both the LEGO and VEX platforms.
- The competition will be held towards the end of the school year, preferably after sports seasons have ended.
- The competition will culminate with an awards ceremony where team members will be awarded individual 1st, 2nd, and 3rd place medals and schools will be awarded State Champion and Runner-Up trophies, per division.
 - If a single school wins both 1st and 2nd places, no Runner-Up trophy will be awarded.

Match

- A match is a set of runs where four teams/robots try to score points simultaneously. The number of runs and their time limits are specified in each year's specific game rules.
 - Before each of the runs, the robots will be placed in the starting zone, and the game board reset according to the rules of the competition.
 - During each run the robots may be restarted in the starting zone according to the rules of competition.

- At the end of the runs, the match is finished and match scores will be tallied according to the rules of the competition. A team's total score is the aggregate of all completed matches. At the end of the seeding rounds, every teams' lowest-scoring round will be dropped.
- During a match, only three (3) students per team may be at the game board at a time. If a team has more than three (3) students, then they may swap positions between runs.

Game Board

- The game board is the field on which the competition is played.
- Game boards will be different each year and will be played with different scoring elements, layouts, multipliers, bonuses and rules.
- The game board will be a 12' x 12' and will utilize dark gray foam puzzle mats. The game board has four color coded starting zones
- Competing teams will have a designated starting zone at the beginning of each match. Other elements of the game board will be defined in each year's competition rules.

Starting Zone

- Each robot/team will start a match in a designated starting zone. The starting zone will be 12" X 12" and connected to the game board.
- The robot must fit **completely** within the bounds of the starting zone (this includes attachments and wires; nothing can hang over the sides of the starting zone.)
- The maximum height of the robot will be determined by that year's competition rules.

Competition Rules

- The competition rules vary year to year, as do the scoring elements, rules and game board design; as such, these rules are not defined in this document. The competition rules will be published as soon as possible but no later than Kick-Off.
- The rules committee is responsible for the specific rules of the competition each year. The competition rules govern the scoring, game play, game board design and interaction of the robots on the game board.

Robots

- Robots may be built from one of the following platforms:
 - LEGO Inventor (<https://www.lego.com/en-us/product/robot-inventor-51515>)
 - LEGO EV3 (heritage model, common for most teams) (<https://education.lego.com/en-us/middle-school/shop/mindstorms-ev3>)
 - LEGO NXT (heritage model)
 - VEX IQ (<https://www.vexrobotics.com/vexiq/products>)
- In addition to the robotics kits listed above, the following parts may also be used in the construction of the robot:
 - Any non-motorized LEGO part (standard or Technic)
 - Any non-motorized VEX IQ part
 - Most 3rd party sensors compatible with LEGO or VEX (note - a sensor from an older platform may be used with a newer platform, as long as physical modification to the sensor is not necessary)
- For a part to be permissible, the following must be true:
 - It must be commercially available (i.e. any team can buy the part / sensor in an unmodified form).
 - It must not break the 4 motor, 4 sensor, 1 battery limit.
 - It must not require an adapter, glue, tape or adhesive to make it work with a particular platform.
 - It must not require modification to work with a given platform.
 - It must not be able to be used for remote control, even if the team did not install it for that purpose. These include (but are not limited to) IR sensors and sound sensors.
- Robots must be contained entirely within the starting zone (this includes any cables and attachments) and meet any height requirements defined by the competition rules at the beginning of each start during a match run.
 - Robots can be modified at any time during the competition, including during a run, but must still be able to be contained entirely within the starting zone when measured.
- During a match the robot can have at most four motors and four sensors. More can be brought to the match and swapped as the team desires, but only four of each at a time may be connected.
- After competition rounds begin, all robot programming must be limited to a physical cable; any wireless connectivity to the robot such as WiFi, infrared or Bluetooth is prohibited.

Science Fair

Upper Elementary School (Grades 3-5) and Middle School (Grades 6-8)

UPDATES COMING NOVEMBER 2023

Details

- Each school may send three (3) projects from Middle School (6th -8th) and three (3) projects from Elementary School (3rd-5th).
 - Projects may be the work of individuals or groups of no more than 3 students.
- Schools are expected to host their own Science Fair in order to determine the students selected to attend.
- The Middle School Fair will be held at one location and the top three (3) placing projects will receive medals.
- Elementary students will participate at an Elementary Academic Day in their region. The top three (3) placing projects will receive medals.
- A rubric for judging will be provided.
- Any discipline of science can be represented in the projects.
- Students will be given approximately three (3) feet of table space to display their project.
- At least one (1) student per project will be interviewed by the judges.
- A rubric will be published on the GAPPS website by September 1 of each school year.

Spelling Bee

Elementary School (Grades 1-5) and Middle School (Grades 6-8)

General Information

Middle School Bee

- Grades 6th-8th allowed
- Each school may send a maximum of 3 spellers to the MS competition.
- The spellers may be any combination of grades 6, 7, 8. (e.g. 2 students from 8th and 2 from 7th or 3 from 7th, etc.)
- The spelling competition will be in written form. 70 words total (the last 10 will be used as tie-breaker)
- Region events will be held during MS Academic Days in October.
- Each school will have their own competition and their top three (3) spellers will advance to Region competition (boys or girls)
- The number of students advancing to State will be adjusted yearly by GAPPS. The determining factors are the number of regions and how many schools are in the region. The top two (2) per region will be the suggested number.
- GAPPS will provide a practice list of 100 words. Some of these words will be used during the bee. The practice list will be posted on the GAPPS website.
- Words will be obtained by GAPPS from the online version of the Merriam-Webster Dictionary and Thesaurus. It can be found here: <http://www.merriam-webster.com/>. The online version is the final authority and sole source for the spelling words.

Elementary Bee

- Individual Bees will be held for grades 1st - 5th.
- Bees will be held during Region Elementary Academic Days.
- Each school will have their own competition and their top two spellers from each grade will advance to Region competition (boys or girls).
- There is **no** State event for elementary grades.
- Bees for 1st -3rd graders will be oral. Bees for 4th & 5th graders will be written.
- GAPPS will provide a list of 100 words that will be used during the first two (2) rounds only. These will be posted on the GAPPS website.
- All other rules for elementary grades will be the same as for middle school.

Oral Bee Rules: Based on Scripps

Pronouncer's Role

The pronouncer strives to pronounce words according to the diacritical markings given to them by GAPPS and taken from the online version of the Merriam-Webster Dictionary.

- **Homonyms:** If a word has one or more homonyms, the pronouncer indicates which word is to be spelled by defining the word.
- **Speller's requests:** In oral competition the pronouncer responds only to the speller's requests for repetition of the word's pronunciation/phonetics, a definition, a sentence, or part of speech. When presented with requests for alternate pronunciations, the pronouncer or associate pronouncer checks for alternate pronunciations in Webster's Online dictionary.
- **Pronouncer's sense of helpfulness:** The pronouncer may offer word information — without the speller having requested the information — if the pronouncer senses that the information is helpful and the information appears on the information provided by GAPPS or in the Webster's Online Dictionary.

Speller's Role

The speller makes an effort to face the judges and pronounce the word for the judges before spelling it and after spelling it. The speller, while facing the judges, makes an effort to utter each letter distinctly and with sufficient volume to be understood by the judge. The speller may ask the pronouncer to say the word again, define it, use it in a sentence, provide the part of speech or provide an alternate pronunciation or pronunciations.

- **Misunderstandings:** The speller is responsible for any misunderstanding of the word unless (1) the pronouncer never provided a correct pronunciation; (2) the pronouncer provided incorrect information regarding the definition, part of speech or language of origin; or (3) the speller correctly spelled a homonym of the word and the pronouncer failed to either offer a definition or distinguish the homonyms.

Judge's Role

The judges listen carefully, determine whether or not words are spelled correctly and uphold the rules. The decisions of the judges are final. There will be three judges including the Pronouncer.

- **Misunderstandings:** The judges will not respond to the speller's question(s) about the word and its pronunciation. It is sometimes impossible to detect a misunderstanding until a spelling error has been made, and the judges are not responsible for the speller's misunderstanding.
- **Pronouncer Errors:** The judges compare the pronouncer's pronunciation with diacritical markings in the word list. If the judges feel that the pronouncer's pronunciation does not match the pronunciation specified in the diacritical markings, the judges will direct the pronouncer to correct the error as soon as it is detected.
- **Disqualifications for reasons other than clear misspelling:** The judges will disqualify a speller (1) who does not approach the microphone when it is the speller's time to receive the word unless there are extenuating circumstances that, in the judges' sole discretion, merit holding the speller's word in reserve and offering it to the speller after all other spellers in the round have spelled and before the close of the round; (2) who engages in unsportsmanlike conduct; (3) who, in the process of retracing a spelling, alters the letters or sequence of letters from those first uttered; or (4) who, in the process of spelling, utters unintelligible or nonsense sounds.
- **Speller activities that do not merit disqualification:** The judges may not disqualify a speller (1) for failing to pronounce the word either before or after spelling it, (2) for asking a question, or (3) for noting or failing to note the capitalization of a word, the presence of a diacritical mark, or the presence of a hyphen or other form or punctuation.
- **Protests:** All protests must be made before the next student's word is given.
- **Alternate Spellings: From Scripps:** The Official Dictionary and Source of Words Merriam-Webster Unabridged is the final authority and sole source for the spelling of words. If more than one spelling is listed for a word, any of these spellings will be accepted as correct if the following three criteria are met: (1) the pronunciations are identical, (2) the definitions are identical, and (3) the words are identified as being variants of each other. Spellings having temporal labels (such as archaic, obsolete), stylistic labels (such as substandard, nonstandard) or regional labels (such as North, Midland, Irish) that differ from main entry spellings not having these status labels will not be accepted as correct.

End-of-Bee Procedure

- If all spellers in an oral spelling round misspell, all remain in the competition and a new round begins with the spellers spelling in their original order.
- If only one speller spells correctly in a round, a new one-word round begins and the speller is given an opportunity to spell the next word on the list (anticipated winning word). If the speller correctly spells the anticipated winning word in this one-word round, the speller is declared the champion. If the speller misspells the anticipated winning word in a one-word round, a new round begins with all the spellers who spelled correctly and incorrectly in the previous round. These spellers spell in their original order.

Written Bee Rules:

- Contestants will take a written test. Words are to be written in ink only. All of the words given will come from the online *Merriam-Webster Dictionary*.
 - MS will have 70 words total (the last 10 will be used for tie-breaker)
 - 5th Grade will have 60 words total (the last 10 for tie-breaker)
 - 4th grade will have 50 words total (the last 10 for tie-breaker)
- Contestants will not be allowed to use scratch paper to write the word. They will only be allowed to write the word once on their exam paper.
- If the contestant makes an error, they are not allowed to start over on a new sheet.
- Contestants are only allowed one sheet of paper (provided by GAPPS) for the exam.
- When judges are correcting papers, the following will count as errors:
 - Words written so poorly you cannot read them
 - Any word written with letters written on top of another (ex. a “c” over a “k”)
 - Any words left off
 - Any word that is scratched through, corrected, and/or re-written
 - When a word can be spelled more than one way, the preferred spelling will be the correct spelling of that word. Any variation would be considered incorrect.
- The tie-breaker words will only be used in the event of a tie and will only be graded one at a time between the tied individuals until a word is spelled incorrectly.
- The examiner will provide a definition and the word used in a sentence if a contestant asks for either one.
- The number of correctly spelled words will determine first and second place